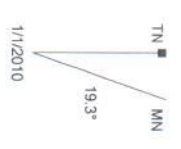


Garmin HuntView Topo - Alaska Southeast v2
 © (c) 2012 Navteq. All rights reserved. 2018
 © Courtesy of National Oceanic and Atmospheric Administration / National Ocean Service 2018
 © Garmin, 2018
 © Garmin, Ltd. and its Subsidiaries 2018
 © 1987-2017 Here. All rights reserved. 2018
 © 2017 TripAdvisor, LLC. All rights reserved. 2018

Internal Storage





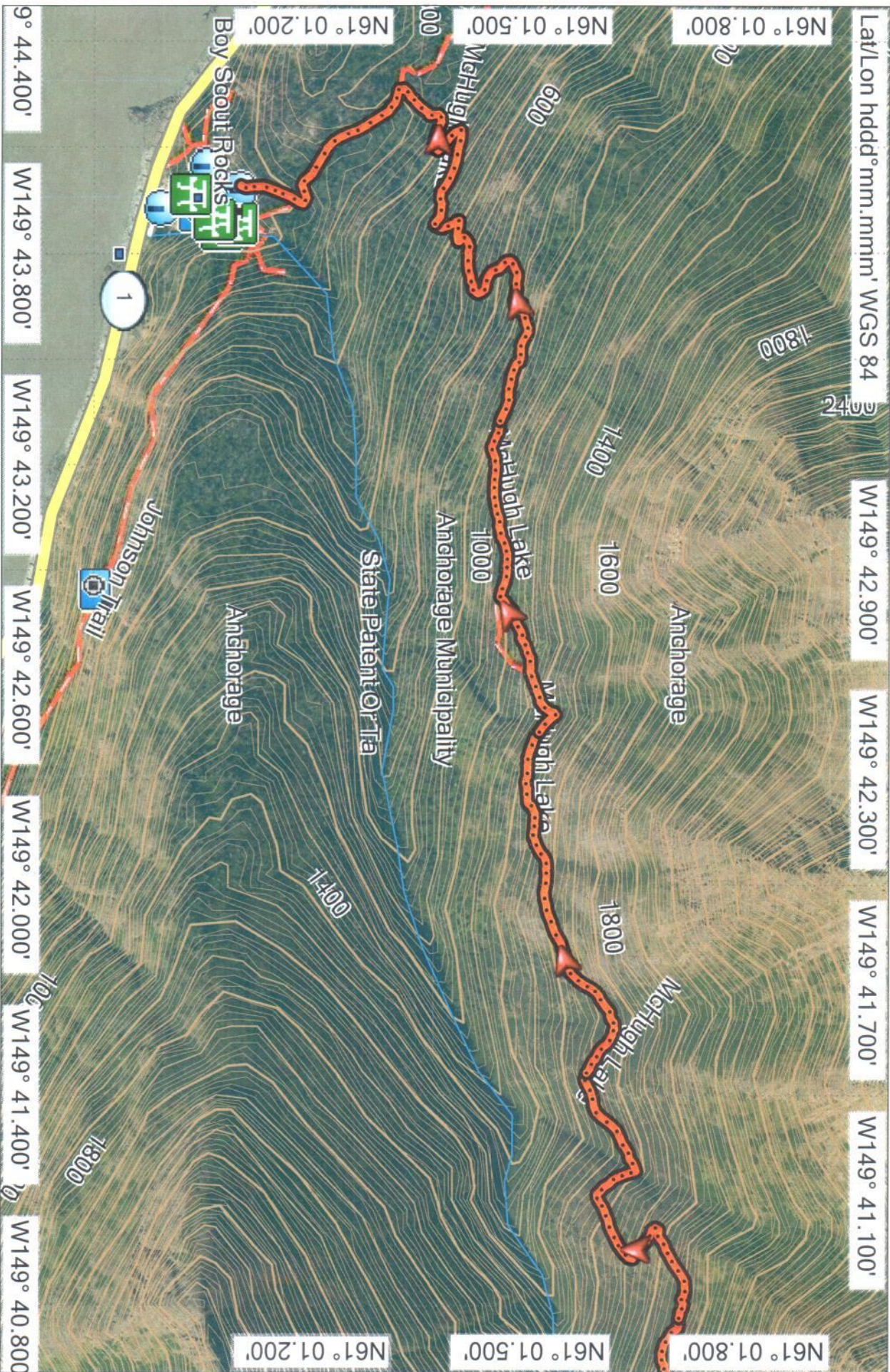
Garmin HuntView Topo - Alaska Southeast v2

© 2012 Navteq. All rights reserved. 2018
 © Courtesy of National Oceanic and Atmospheric Administration / National Ocean Service 2018
 © Garmin 2018
 © Garmin Ltd and its Subsidiaries 2018
 © 1987-2017 Here. All rights reserved. 2018
 © 2017 TripAdvisor LLC. All rights reserved. 2018

Internal Storage

GARMIN

TN
 MN
 19.2°
 1/1/2010



Lat/Lon hddd°mm.mmm' WGS 84

W149° 42.900'

W149° 42.300'

W149° 41.700'

W149° 41.100'

2400

1800

1400

1600

1800

1000

1000

1800

N61° 01.200'

N61° 01.500'

N61° 01.800'

N61° 01.200'

N61° 01.500'

N61° 01.800'

N61° 01.200'

N61° 01.500'

N61° 01.800'

9° 44.400'

W149° 43.800'

W149° 43.200'

W149° 42.600'

W149° 42.000'

W149° 41.400'

W149° 40.800'

Internal Storage

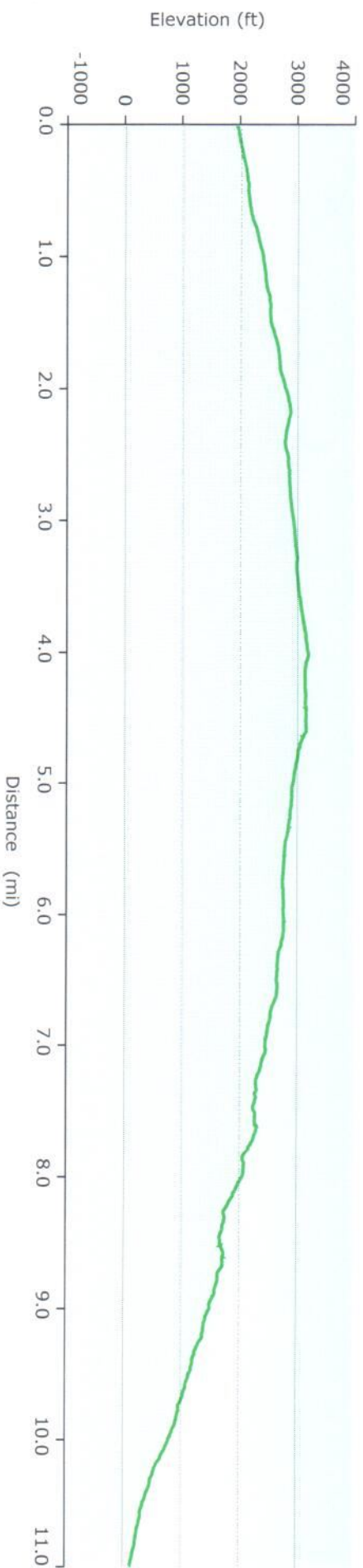


GARMIN



Garmin HuntView Topo - Alaska Southeast v2
 ©(c) 2012 Navteq. All rights reserved. 2018
 © Courtesy of National Oceanic and Atmospheric Administration / National Ocean Service 2018
 © Garmin 2018
 © Garmin Ltd. and its Subsidiaries 2018
 ©1987-2017 Here. All rights reserved. 2018
 ©2017 TripAdvisor, LLC. All rights reserved. 2018

Graph



Statistics

Summary

Points: 1475 Distance: 11.2 mi Area: 7.8 sq mi

Time

Elapsed Time: 6:13:15 Moving Time: 4:57:56 Stopped Time: 0:46:33

Speed

Avg: 1.8 mph Avg Moving: 2.3 mph Min: 0.0 mph Max: 4.5 mph

Elevation

Min: 115 ft Max: 3202 ft Ascent: 1729 ft Descent: 3550 ft Grade: -3.1 %