

## West Butte Trail

Summer hiking trail

<b>Tread surface:</b>	Gravel, wood stairs, geo-block hardened, dirt surface, 2'-6' wide
<b>Length:</b>	1.5 miles (2.4 kilometers)
<b>Difficulty:</b>	Moderate to difficult
<b>Activity:</b>	Summer – hiking
<b>Trailhead:</b>	Parking area; public toilet facilities
<b>Nearest town:</b>	Palmer
<b>Manager:</b>	MSB Parks and Outdoor Recreation Division (Phone 745-9690)
<b>Volunteer Trail Care Crew:</b>	vacant

### ***How to get there***

Access to the West Butte Trail is from Mothershead Circle – From Palmer, go southeast on the Old Glenn Highway, 5.5 miles from Palmer take a right on Bodenbug Loop, proceed 1/2 mile and take a left on Mothershead Circle, proceed about 400 feet to the trailhead parking area on the right. The trail actually begins about 300 feet further along Mothershead Circle. Hikers should walk along the road shoulder to the trail, which is gated to prevent vehicle traffic, and which is located between two homes.

### ***General description***

The West Butte Trail is a hiking trail along the west side of Bodenbug Butte. The first mile is a moderate climb following a wide gravel path which meanders its way through old growth forest and alder thickets. At the top of a small hill the hiker can rest on a bench enjoying the view of the Matanuska River valley and Talkeetna Mountains to the northwest. It is here that the trail becomes more challenging and starts to climb the west side of Bodenbug Butte. From this point to above tree line the trail surface alternates between stairs and a narrow path before cresting the cliff-like west slope. At the west crest of the butte the trail becomes less steep

and traverses the grassy slopes towards the summit of the butte to the east. Even with stairs and a hardened path the last 1/2 mile of the trail can be challenging. Be cautious and watch your step.

The hike to the summit of the butte and back to the trailhead can be completed in 2 hours. The trail offers wonderful views of the Matanuska River valley, Talkeetna Mountains to the northwest, and once on top of the butte, grand views of the Knik River valley, Knik Glacier and Pioneer Peak.

### ***Trail uses***

The West Butte Trail is maintained by the MSB Parks and Outdoor Recreation Division for hiking. Mountain bike riding and horse back riding are only allowed on the first mile of the trail, which is hardened with gravel.

### ***\*Take note***

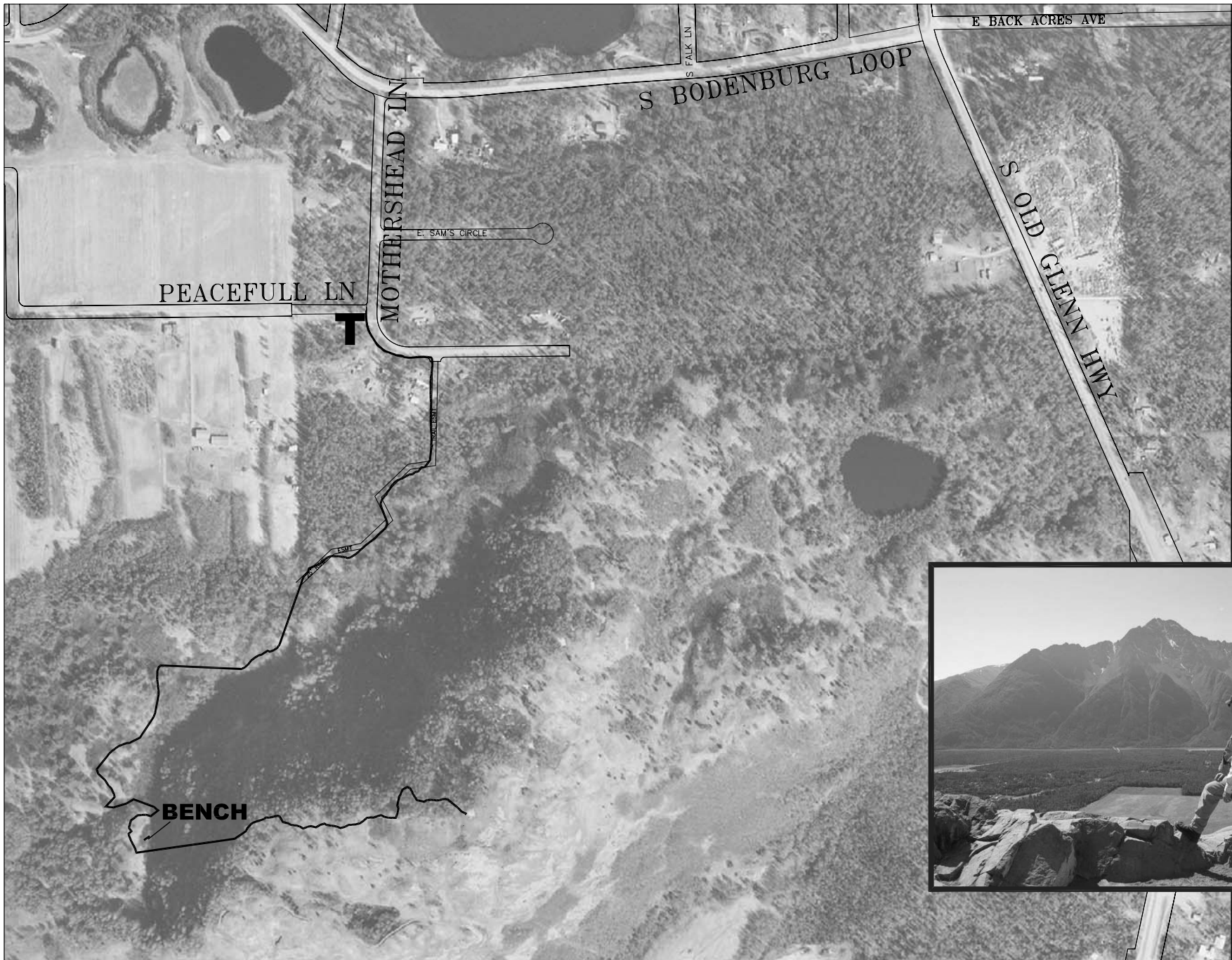
Moose frequent this area. Make your presence known. Keep dogs on leash and under your control.

# West Butte Trail



**Matanuska Susitna Borough  
Community Development Department  
350 E. Dahlia Avenue  
Palmer, Alaska 99645**

**(907) 745-9631  
[www.matsugov.us](http://www.matsugov.us)**



# LEGEND

**T** Trailhead



SCALE IN FEET

