

TALKEETNA LAKES PARK

AT A GLANCE

- TRAIL HEAD** Comsat Road, just off Talkeetna Spur Road
- USE** Water and trail fur, winter & summer
- DISTANCE** 9.6 miles
- LEVEL** Easy to Moderate



Patric Sullivan, MSB

HOW TO GET THERE

From the Talkeetna Spur Road turn east on Comsat Road, take the first right into the main parking lot. A wooden sign marks the entrance to the park.

TAKE NOTE

Dogs must be on a leash. Bring your bug spray during thick mosquito season. Wear a life jacket. Alasra lakes are cold and can cause hypothermia.

Community Development Department
907.981.8578

Parking Fee \$5/day \$40/annual pass

Pay Online ecommerce.matsugov.us

DESCRIPTION

Talkeetna Lakes Park is the only Matanuska-Sustina Borough park where canoeists or kayakers can travel the two-mile chain of lakes by carrying their watercrafts along the connecting portage trails. The park encompasses 1,189 acres including four lakes, X, Y, Z and Tigger. Lush forests of spruce, cottonwood and birch provide a quiet setting for hiking, canoeing, fishing, and mountain biking on a singletrack trail in the summer. By winter, there's snowshoeing and cross-country skiing opportunity on a 20-foot wide groomed trail and fat biking on the singletrack.

The hiking trail around X Lake is 3.25 miles. Loons call on the lake. Beavers, foxes, bears, and moose are native. In spring, delicate roses, fiddleheads, and columbine unfold. Two half-log benches along the trail allow time to reflect.

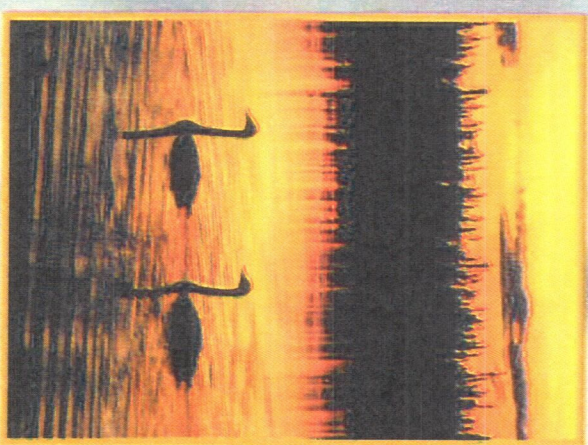
- 9.6 miles of trails on land
- 5 miles of groomed Nordic ski and 7 miles of groomed ski trail on frozen lake



Mark Goetsch, MSB

TALKEETNA LAKES PARK

MAT-SU BOROUGH TRAIL



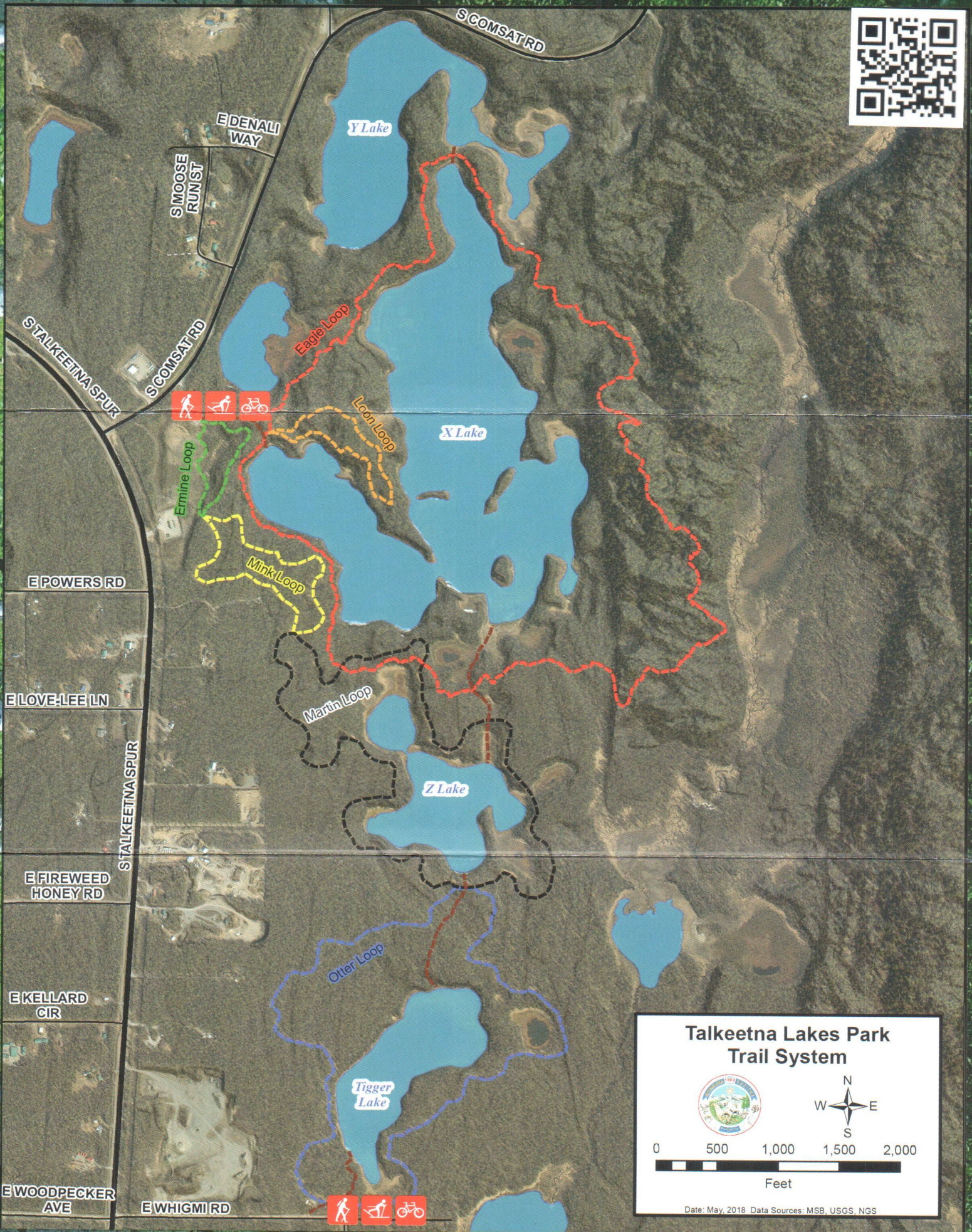
Siegfrid Hinman






350 E. Dahlia Avenue
Palmer, Alaska 99645

www.matsugov.us

Created by: Mar. Cui, Revised: D. D. H. 10/15/2015



**Talkeetna Lakes Park
Trail System**



0 500 1,000 1,500 2,000
Feet

Date: May, 2018 Data Sources: MSB, USGS, NGS