



Ptarmigan Creek/Falls Creek Trail

Seward Ranger District, Chugach National Forest
(907) 224-3374



Recommended Uses

Difficulty

More Difficult

Public Use

Moderate

Length (one way)

7.1 miles

USGS Map

Seward B6, B7

Trip Time (one way)

3 hours

Recommended Season

May-October

Elevation Gain

450 feet

Trail Access

At Mile 23, Seward Highway, and turn east into Ptarmigan Creek Campground. Begins at the south end of the campground. *Ptarmigan Ck and Lake Trail, INHT, and the Ptarmigan Ck Cutoff Trail are closed to saddle/pack stock from April 1-June 30 and motorized vehicles from May 1-November 30. Falls Ck ORV Trail is open to motorized vehicles year round to the mine at mile 3.6.*

Trail Grade/Condition

The first mile of this trail is fairly level. After that, there are some steep sections up to the lake. The trail around the lake is a primitive route that may be very brushy and is not recommended for children, horse or bikes. Beginning at mile 2 the vegetation along the trail is usually overgrown with tall grass, cow parsnip, elderberries and alder.

Recreational Opportunities

Spending night at campground and hiking first two miles of trail makes a good family outing. Families able to hike longer distances will be rewarded with turquoise reflection of lake. At .75 mile is the INHT junction and at mile 2.4 is the Ptarmigan Cr.Cut-off (access at mile 24 Seward Hwy, Solar Mtn. Rd.). Both these trails are 1 mile in length and join the Falls Ck ORV Trail at .7 mile and 1 mile respectively.

From trailhead, the trail follows creek upstream but occasionally leaves it to ascend a scenic knoll or rock outcropping. Path is wet in places. Trail leaves spruce forest after second mile and ascends through a large meadow and back to wooded area. Many good views of the surrounding mountains. Ptarmigan Lake is at mile 3.5. Trail continues 3.6 miles to east end of lake. For mountaineering, trail provides access to Andy Simons Mountain, along southern boundary of lake.

Wildlife includes moose, bear, spruce grouse, mountain goats, and Dall sheep. Hunting for these species is permitted in designated seasons. Fishing for Dolly Varden and rainbow trout in Ptarmigan Creek, and Dolly Varden in Ptarmigan Lake. Excellent viewing of many brilliant, red sockeye salmon from campground to mouth of Ptarmigan Creek during their run upstream in late July and early August. Salmon fishing is prohibited in these areas. [Review Alaska Department of Fish and Game \(ADF&G\) hunting and fishing regulations.](#)

Special Considerations

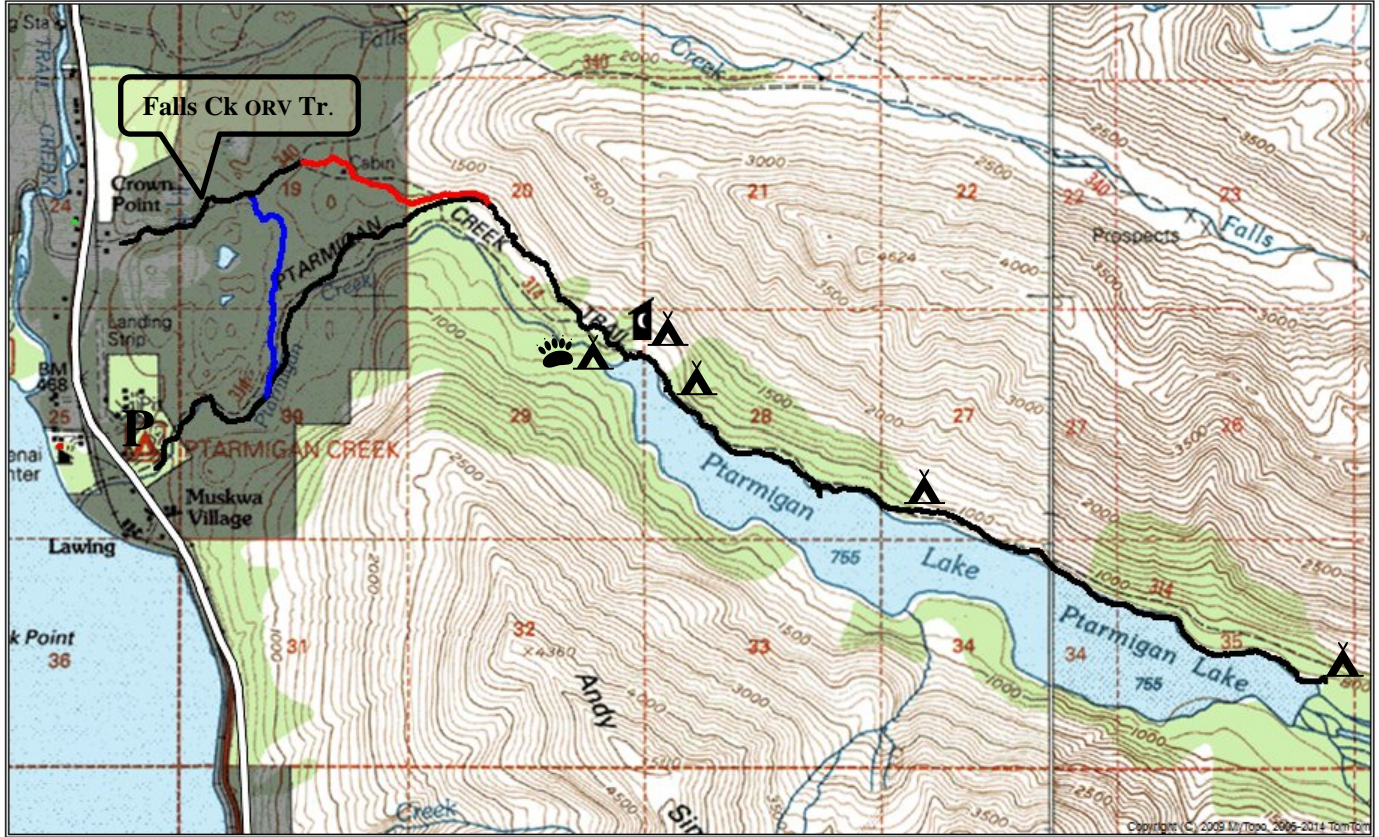
Winter travel is unsafe and not recommended due to avalanche hazards beyond mile 2. Travel beyond mile 1 is not recommended for horse or bicycle use due to numerous exposed tree roots, steep uphill grades and primitive trail conditions around Ptarmigan Lake.

Use caution with bear and moose. Giardia (a microscopic parasite that can infect warm-blooded animals and humans) could be present in all open water sources, filter surface water before drinking. Winter travel may be hazardous due to avalanches, thin lake ice, and white out conditions above tree line. Winter travelers need to be able to evaluate avalanche and over-ice travel hazards. Be prepared for rapid weather changes. Remember to pack out your trash. You can contact a U.S. Forest Service office to receive more detailed information on safety precautions and Leave No Trace outdoor skills and ethics.



Ptarmigan Creek Trail

Seward Ranger District, Chugach National Forest (907) 224-3374










Map not to scale

Campsites

- Mile 3.42** N 60° 24' 46" W 149° 18' 09"
- Mile 3.47** N 60° 24' 39" W 149° 17' 50"
- Mile 3.69** N 60° 24' 37" W 149° 17' 60"
- Mile 4.54** N 60° 24' 16" W 149° 16' 51"
- Mile 7.06** N 60° 23' 33" W 149° 12' 59"

LEGEND

-  Ptarmigan Creek/Lake Trail
-  INHT
-  Ptarmigan Cr. Cutoff Tr.
-  Trailhead Parking
-  Designated Campsite
-  Bear Box (food storage)
-  Backcountry Toilet