

Off-Highway Vehicle Use Areas

for the White Mountains National Recreation Area and the Steese National Conservation Area

The designation of Off-Highway Vehicle (OHV) use areas applies to all lands and water surfaces within the White Mountains National Recreation Area (WMNRA), BLM-managed public lands between the WMNRA and the Steese and Elliott highways, the Steese National Conservation Area (SNCA), and the Beaver Creek and Birch Creek Wild and Scenic River corridors as shown on the Off-Highway Vehicle Use Areas map.

DEFINITIONS: The term “**winter use**” refers to the time period between October 15 and April 30, inclusive. The term “**summer use**” refers to the time period between May 1 and October 14, inclusive. The term “**all-terrain vehicle**” (ATV) refers to summer off-highway vehicles such as four-wheelers. The term “**snowmachine**” refers to winter off-highway vehicles such as snowmobiles. The term “**off-highway vehicle**” (OHV) refers to both ATVs and snowmachines. The term “**gross vehicle weight rating**” (GVWR) is defined by the BLM as the total weight of the vehicle plus its *maximum* load/carrying capacity as specified by the manufacturer.

A. OHV Use Areas (Limited)

1. The **foothills** area, as shown on the Off-Highway Vehicle Use Areas map, is open to the use of OHVs that have a GVWR less than 1,500 pounds. The U.S. Creek Road, Nome Creek Road, the mining tailings along Nome Creek, Independence Creek Road, Harrison Creek Trail, and the Portage Creek Trail are open to highway vehicles and Utility Terrain Vehicles (UTVs, also called “Side-by-Sides”).
2. The **highlands** area, as shown on the Off-Highway Vehicle Use Areas map, is managed to protect the wild and natural character of the area. This area is open to winter use by snowmachines that have a GVWR less than 1,500 pounds. It is closed to all summer use of ATVs. The use of motorized vehicles in the Windy Creek and Fossil Creek drainages (WMNRA) is prohibited from April 15 to August 31 to avoid disturbance to peregrine falcon nesting areas.
3. **Beaver Creek** and **Birch Creek** have been designated, and are managed, as “wild” rivers pursuant to the Wild and Scenic Rivers Act (WSRA, PL 90-542). The Beaver Creek Wild and Scenic River and Birch Creek Wild and Scenic River corridors are closed to all summer use of motorized vehicles but open to winter use by snowmachines that have a GVWR less than 1,500 pounds.
4. The **Summit Trail** (WMNRA), specifically its 25-foot trail right-of-way, is managed as a non-motorized recreation trail to protect boardwalk for hikers. It is closed to all motorized vehicle use. Winter use by snowmachines that have a GVWR less than 1,500 pounds is allowed, provided such vehicles cross the trail at right angles, more or less, incidental to accessing State of Alaska or federal lands otherwise open to such use.



B. Areas Closed to OHV Use

1. The four designated **Research Natural Areas** (RNAs) shown on the Off-Highway Vehicle Use Areas map are closed year-round to all OHV use. **Serpentine Slide**, **Limestone Jags**, and **Mount Prindle** RNAs are located in the WMNRA. The **Big Windy Hot Springs** RNA is in the southern unit of the SNCA. These areas have been identified as having representative examples of ecosystems or unusual natural features.
2. The **Ski Loop Trail** (WMNRA), **Table Top Mountain Trail** (WMNRA), and **Pinnell Mountain National Recreation Trail** (SNCA), specifically their 50-foot trail rights-of-way, are managed as non-motorized recreation trails to protect board-walk for hikers. These trails are closed year-round to use of motorized vehicles.
3. The **Wickersham Creek Trail** is closed to the summer use of ATVs from its junction with the Trail Creek Trail (by Lee's Cabin) to the Beaver Creek Wild and Scenic River corridor. Lands between the **Bear Creek Trail** and the Beaver Creek corridor are also closed to the summer use of ATVs.

These designations implement provisions of the following plans:

- White Mountains National Recreation Area Resource Management Plan
- Steese National Conservation Area Resource Management Plan
- Beaver Creek National Wild River Management Plan
- Birch Creek National Wild River Management Plan

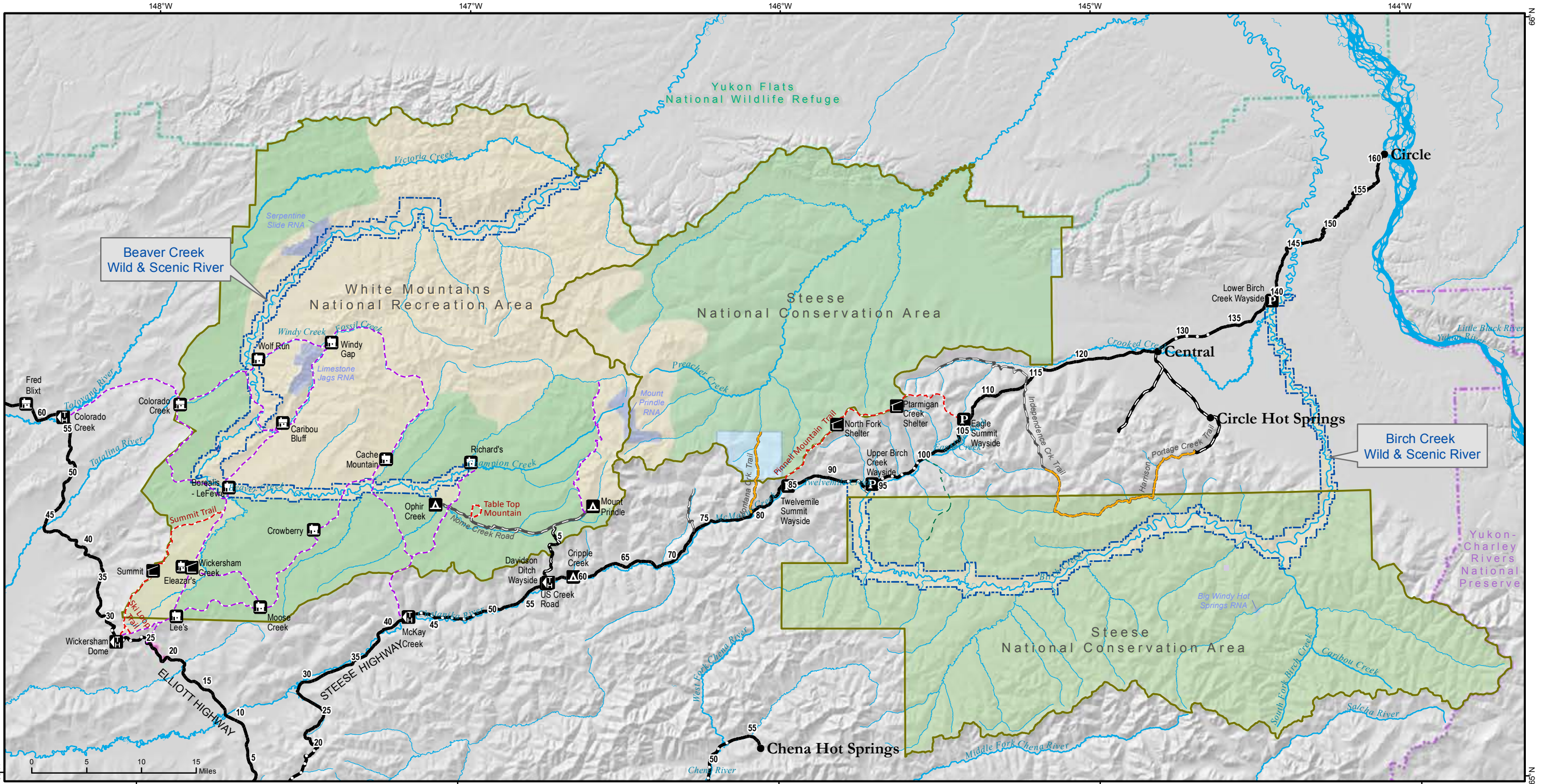
Detailed maps identifying these designated areas are available for viewing at the office listed below.

In December 2016 the BLM Alaska State Director signed Records of Decisions for the Eastern Interior Resource Management Plan. These documents outlined several upcoming changes to the BLM's management of off-highway vehicles in the White Mountains National Recreation Area and Steese National Conservation Area. Implementing new rules will take up to a year and will include publication of proposed rules in the *Federal Register*, a 60-day public comment period, public hearings, and publication of final rules. In the meantime, the rules detailed in this publication remain in effect.

Operators of OHVs in violation of these designations are subject to the penalties prescribed in 43 CFR subpart 8340.0-7. This is pursuant to 43 CFR subpart 8342 and in accordance with the authority and requirements of Executive Order 11644 and 11989. This order will remain in effect until rescinded or modified by the Fairbanks District Manager.

For more information on OHV use areas, contact:

**Bureau of Land Management
Eastern Interior Field Office
222 University Avenue
Fairbanks, Alaska 99709
(907) 474-2200
www.blm.gov/alaska
EasternInterior@blm.gov**



| Management Unit | Summer OHV limitations May 1 – October 14 | Winter OHV limitations October 15 – April 31 |
|--|--|---|
| Highlands Wild & Scenic River Corridors Summer OHV closure areas | Closed to motorized vehicles | Open to snowmachines less than 1500 pounds GWWR |
| Foothills | Open to OHVs less than 1500 pounds GWWR | Open to snowmachines less than 1500 pounds GWWR |
| Non-motorized Trails | Closed to motorized vehicles year round | |
| Research Natural Areas | | |

- Recreation Cabin
- Trail Shelter
- Campground
- Trailhead
- Wayside

- Trails - some trails are maintained primarily for winter use and may not be suitable for summer use
- Non-motorized Trails
- Secondary Roads
- OHV trail - no size restrictions
- Highway (Mileposts labeled)

- National Conservation & Recreation Area Boundary
- Wild & Scenic River Corridors
- State Inholding

Disclaimer: No warranty is made by the Bureau of Land Management as to the accuracy, reliability, or completeness of these data for individual or aggregate use with other data. Original data were compiled from various sources. This information may not meet National Map Accuracy Standards. This product was developed through digital means and may be updated without notification. The information displayed on this map should be used for graphic display only. For official land status information, refer to Cadastral Survey Plats, Master Title Plats, and landstatus case-files.



Map Coordinate System: Albers Conic Equal Area referencing NAD83
 Map Date: 8/11/2017