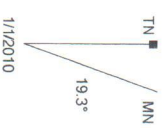


Garmin HuntView Topo - Alaska Southeast v2

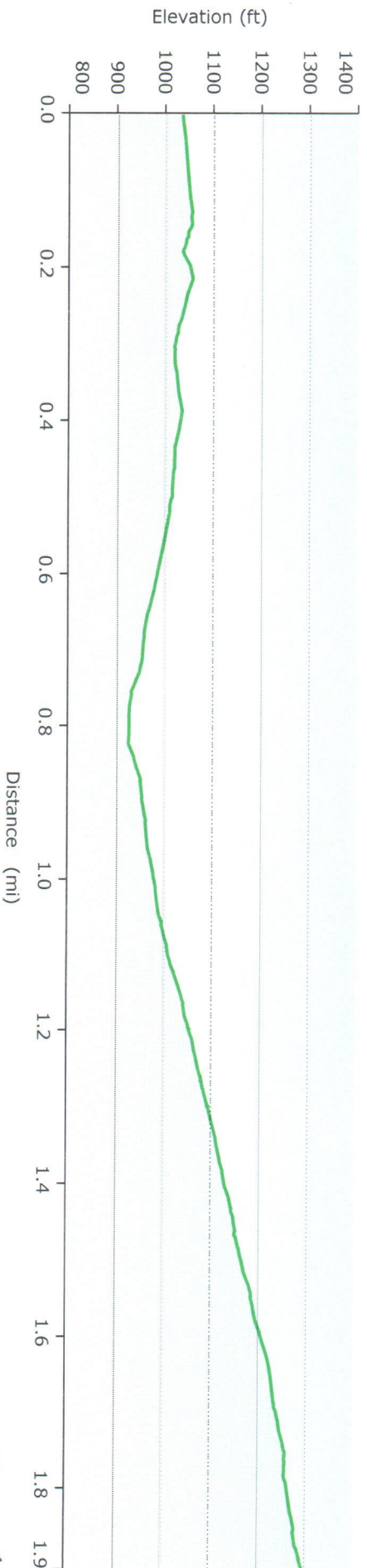
© (c) 2012 Navteq. All rights reserved. 2018
 © Courtesy of National Oceanic and Atmospheric Administration / National Ocean Service 2018
 © Garmin 2018
 © Garmin Ltd. and its Subsidiaries 2018
 © 1987-2017 Here. All rights reserved. 2018
 © 2017 TripAdvisor Lic. All rights reserved. 2018

Internal Storage

*Wolverine Bowl
 to Wolverine Peak - Near Point
 Inter section*



Graph



Statistics

Summary
Points: 299 Distance: 1.9 mi Area: 876108 sq ft

Time
Elapsed Time: 0:35:43 Moving Time: 0:31:24 Stopped Time: 0:04:17

Speed
Avg: 3.2 mph Avg Moving: 3.7 mph Min: 0.0 mph Max: 13 mph

Elevation
Min: 925 ft Max: 1296 ft Ascent: 413 ft Descent: 154 ft Grade: 2.5 %

*Intersection
with
Wolverine Peak
at West Point*



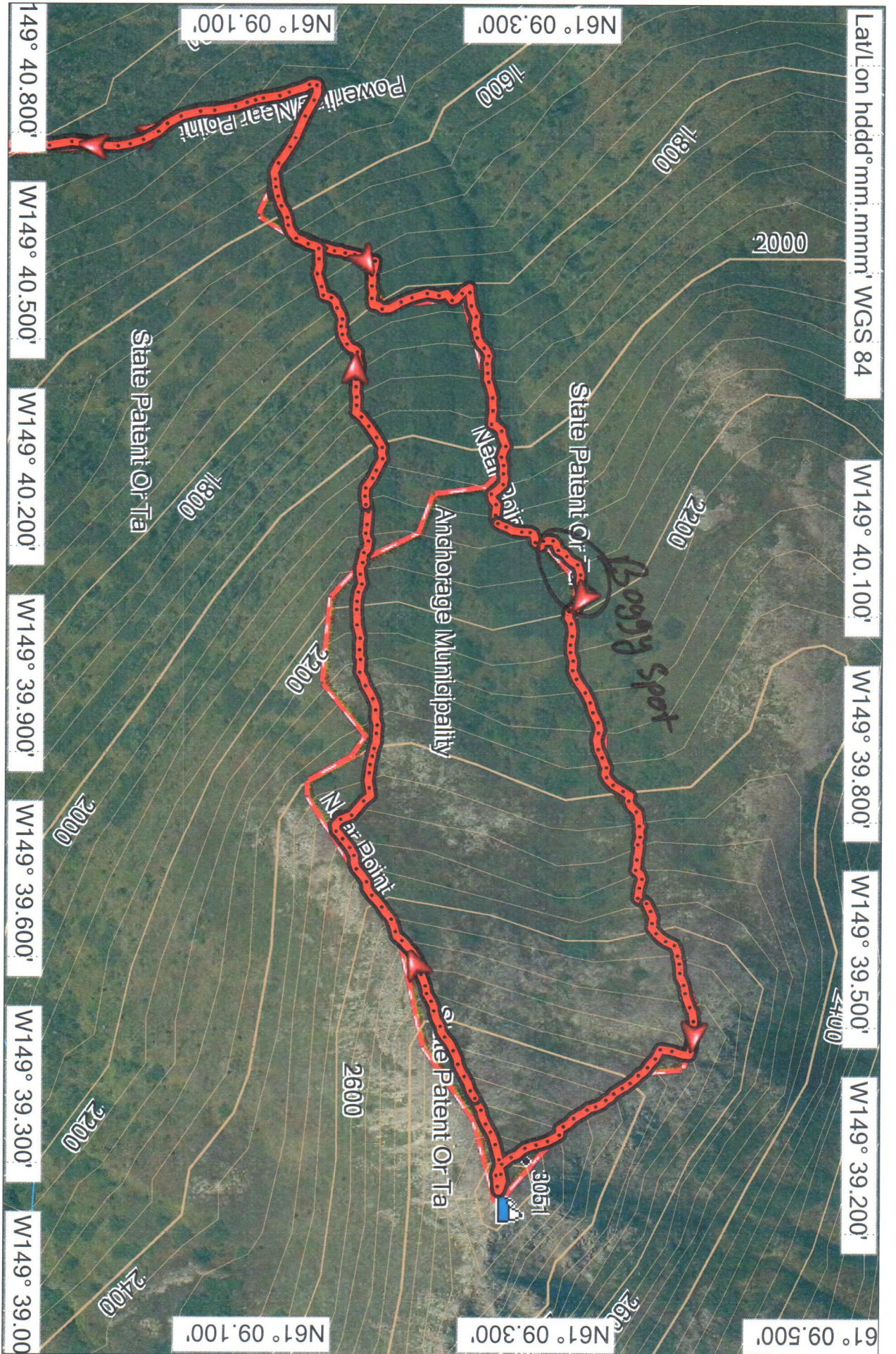
Garmin HuntView Topo - Alaska Southeast v2

© (c) 2012 Navteq. All rights reserved. 2018
 © Courtesy of National Oceanic and Atmospheric Administration / National Ocean Service 2018
 © Garmin 2018
 © Garmin Ltd. and its Subsidiaries 2018
 © 1987-2017 Here. All rights reserved. 2018
 © 2017 TripAdvisor Llc. All rights reserved. 2018

NEAR PT LOOP VIA BASHER



TN
 MN
 19.3°
 1/1/2010



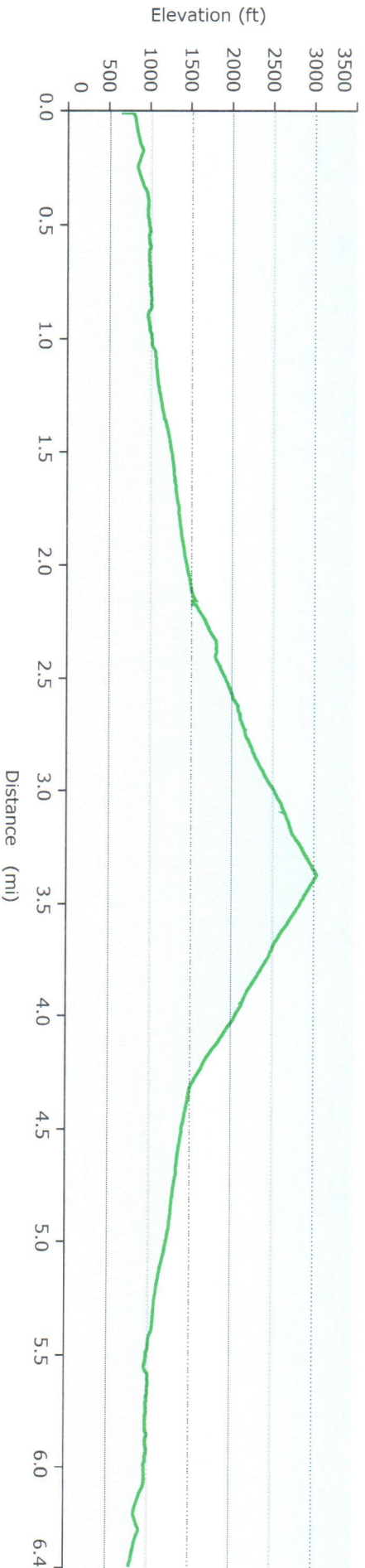
Garmin HuntView Topo - Alaska Southeast v2
 © (c) 2012 Navteq. All rights reserved. 2018
 © Courtesy of National Oceanic and Atmospheric Administration / National Ocean Service 2018
 © Garmin 2018
 © Garmin Ltd. and its Subsidiaries 2018
 © 1987-2017 Here. All rights reserved. 2018
 © 2017 TripAdvisor Lic. All rights reserved. 2018

NEAR PT LOOP VIA BASHER



1/1/2010
 19.3°

Graph



Statistics

Summary

Points: 1059 Distance: 6.7 mi Area: 0.1 sq mi

Time

Elapsed Time: 4:36:37 Moving Time: 3:44:21 Stopped Time: 0:52:08

Speed

Avg: 1.5 mph Avg Moving: 1.8 mph Min: 0.0 mph Max: 9 mph

Elevation

Min: 627 ft Max: 3035 ft Ascent: 2589 ft Descent: 2592 ft Grade: 0.5 %