

Matanuska Greenbelt Trails 2016 - Draft 5.1_user

149°15'W

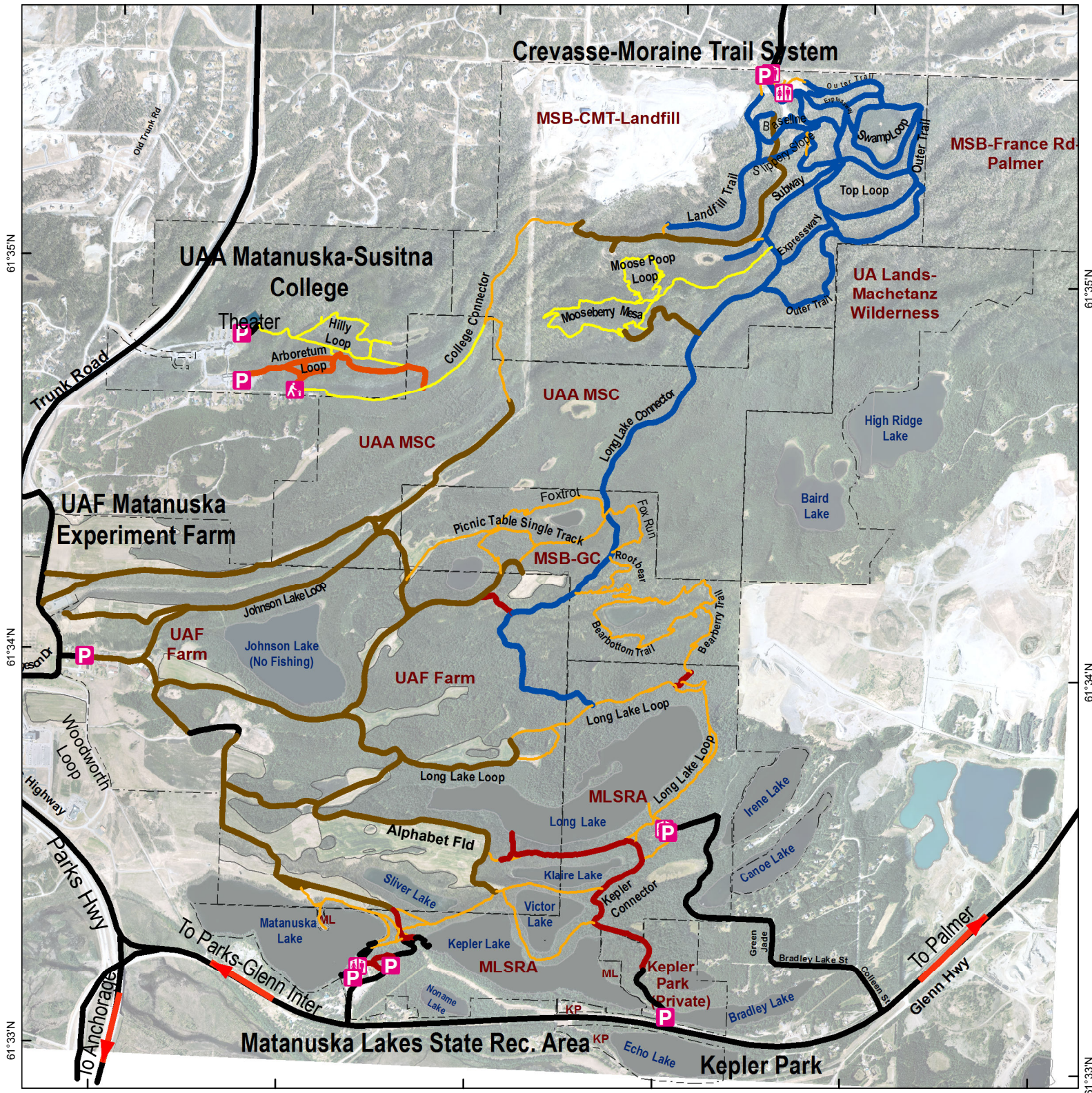
149°14'W

149°13'W

149°12'W

149°11'W

149°10'W



61°35'N

61°34'N

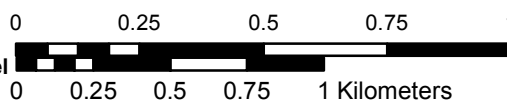
61°33'N

61°35'N

61°34'N

61°33'N

- Legend**
- Trail Tread**
- Hardened-asphalt, gravel
 - Dirt roads
 - Groomable ski
 - Wide track
 - Wide track-no horses
 - Single track
 - Single track-no horses



www.matanuska-greenbelt.org
 Version 5.1 2016/01/02
 Google road map: <http://goo.gl/maps/RASl>

Crevasse-Moraine Trail System (MSB-CMT-Landfill) - Turn south (left coming from Palmer, right coming from Wasilla) on Loma Prieta off Palmer-Wasilla Highway. Managed by Matanuska-Susitna Borough, which also manages Greenbelt Central (MSB-GC).

Matanuska Lakes State Recreation Area (MLSRA) - Turn north (left coming from Anchorage, right coming from Palmer) off Glenn Highway about 0.5 mi east of Glenn - Parks interchange. Managed by Alaska Division of Parks and Outdoor Recreation.

University of Alaska Anchorage Matanuska-Susitna College (UAA-MSC) - Access from Trunk Rd, parking is behind Snodgrass Hall. Please respect the privilege of being able to access their trails. No horses on trails and not maintained for public use.

University of Alaska Fairbanks Matanuska Experiment Farm (UAF Farm) - Active research farm. Please yield to farm equipment and operations. Stay on trails and off fields. No motorized vehicles for general public. Not maintained for public use.

Kepler Park is a private park in southeast corner of greenbelt for non-motorized access. Not for navigation or legal purposes.