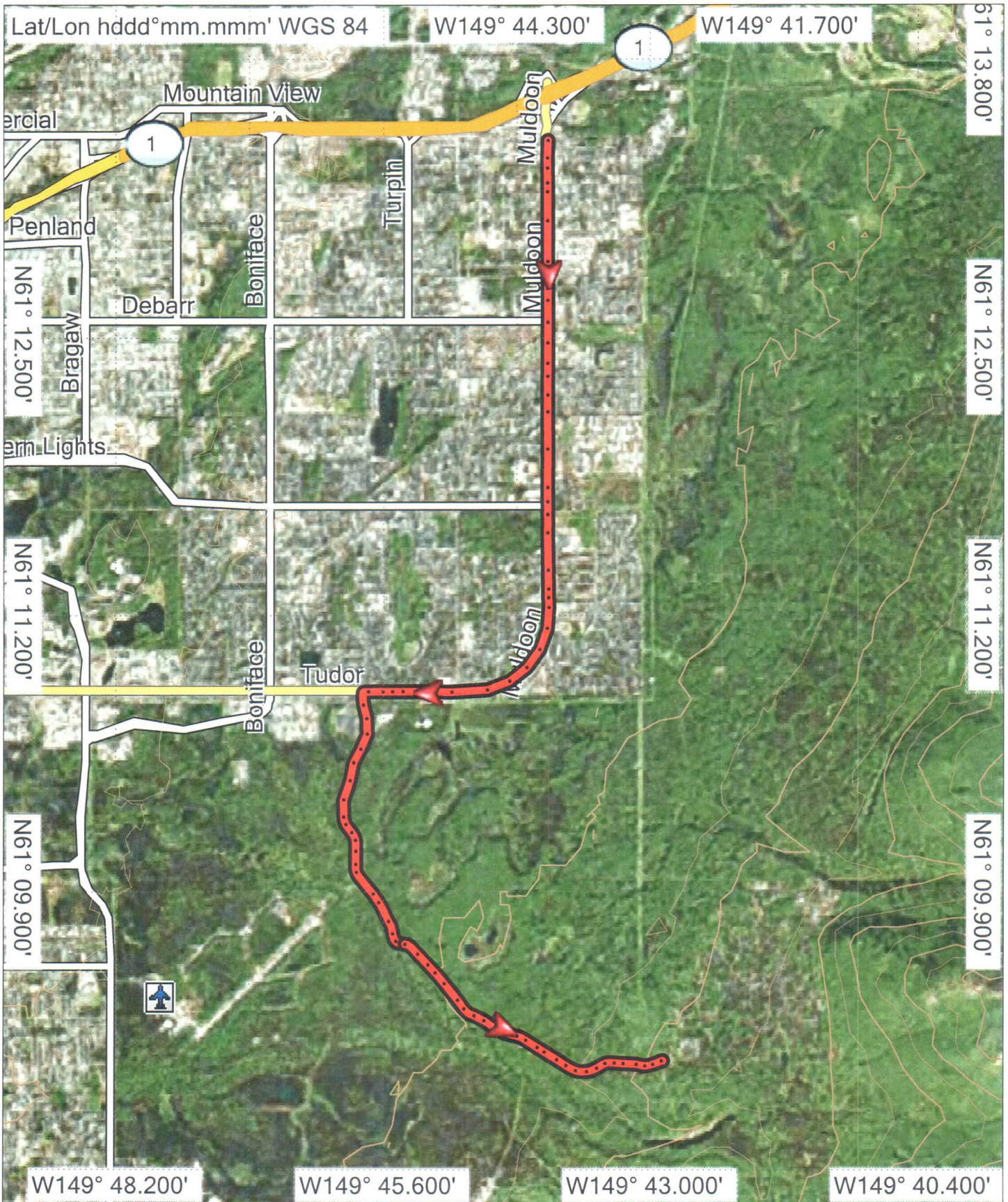


ROAD BASHER VIA TUDOR

Garmin HuntView Topo - Alaska Southeast v2

© (c) 2012 Navteq. All rights reserved. 2018
 © Courtesy of National Oceanic and Atmospheric Administration / National Ocean Service 2018
 © Garmin 2018
 © Garmin Ltd. and its Subsidiaries 2018
 © 1987-2017 Here. All rights reserved. 2018
 © 2017 Trimble Inc. All rights reserved. 2018





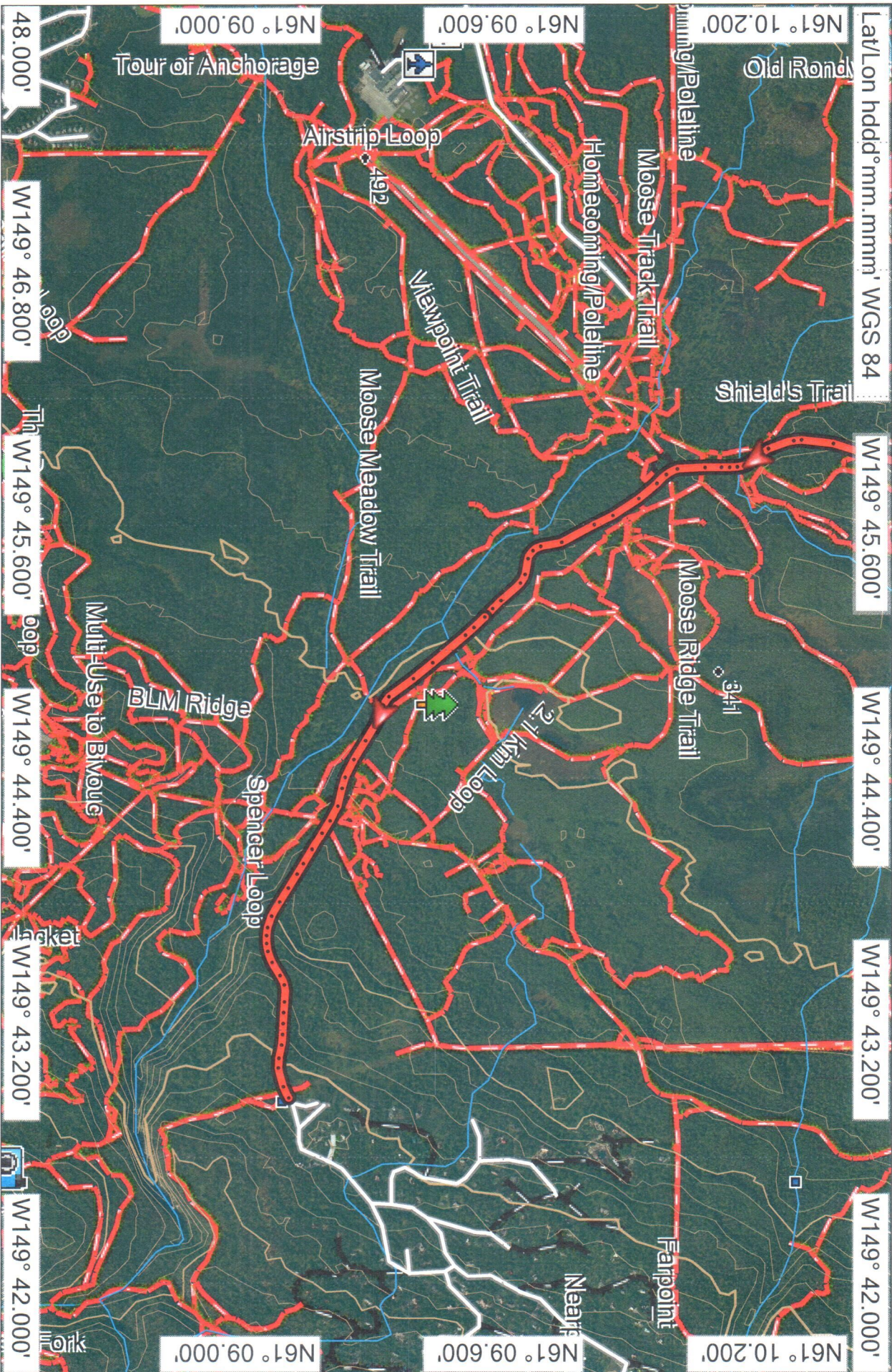
Garmin HuntView Topo - Alaska Southeast v2
 © (c) 2012 Navteq. All rights reserved. 2018
 © Courtesy of National Oceanic and Atmospheric Administration / National Ocean Service 2018
 © Garmin 2018
 © Garmin Ltd. and Its Subsidiaries 2018
 © 1987-2017 Here. All rights reserved. 2018
 © 2017 Tripadvisor Llc. All rights reserved. 2018



!ROAD BASHER MULDOON

TN MN
 19.2°
 1/1/2010

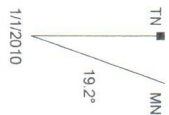
GARMIN.

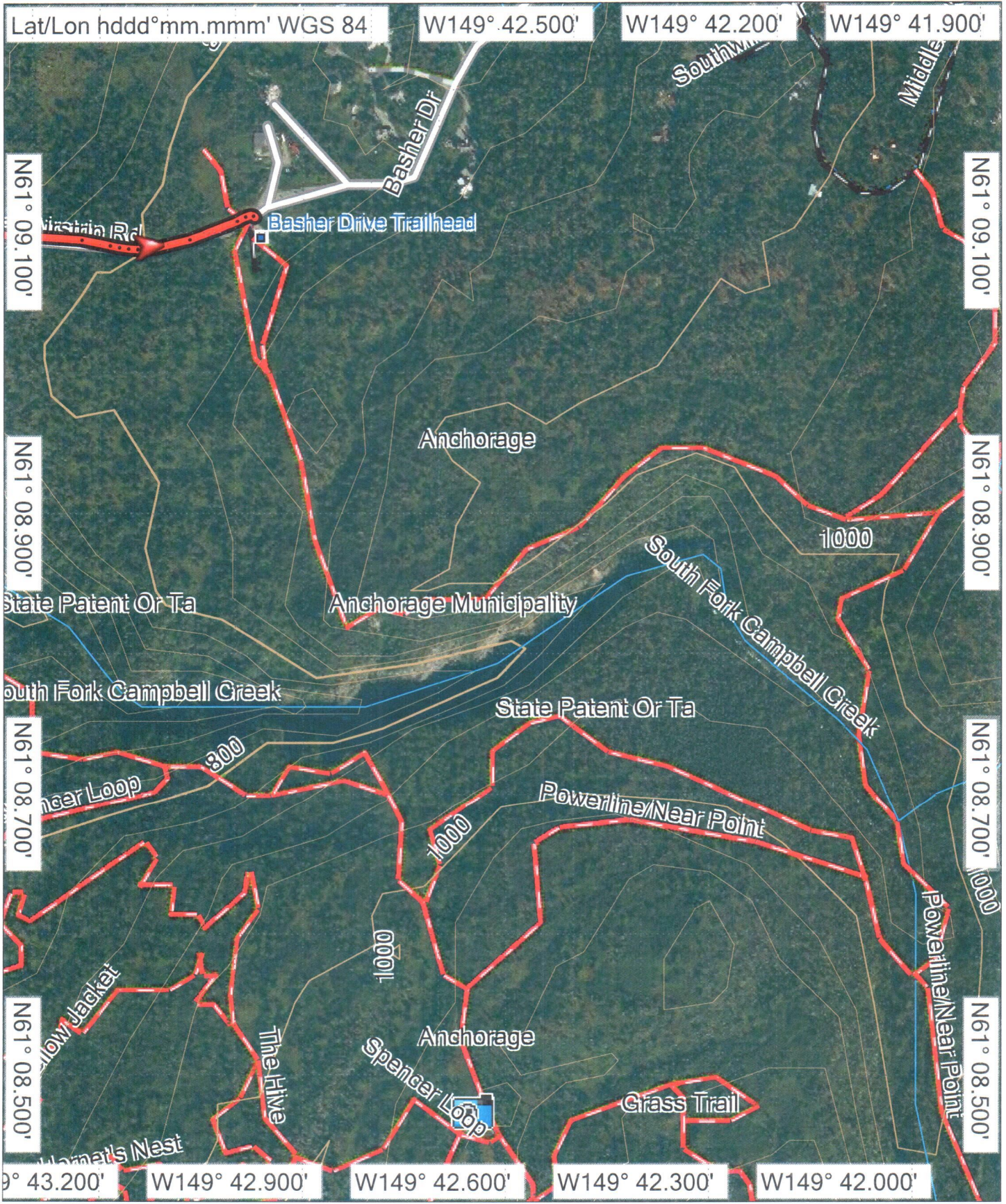


Garmin HuntView Topo - Alaska Southeast v2

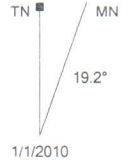
© (c) 2012 Navteq. All rights reserved. 2018
 © Courtesy of National Oceanic and Atmospheric Administration / National Ocean Service 2018
 © Garmin 2018
 © Garmin Ltd. and its Subsidiaries 2018
 © 1987-2017 Here. All rights reserved. 2018
 © 2017 TripAdvisor LLC. All rights reserved. 2018

ROAD BASHER VIA TUDOR





Garmin HuntView Topo - Alaska Southeast v2
 © (c) 2012 Navteq. All rights reserved. 2018
 © Courtesy of National Oceanic and Atmospheric Administration / National Ocean Service 2018
 © Garmin 2018
 © Garmin Ltd. and Its Subsidiaries 2018
 © 1987-2017 Here. All rights reserved. 2018
 © 2017 Tripadvisor Lic. All rights reserved. 2018

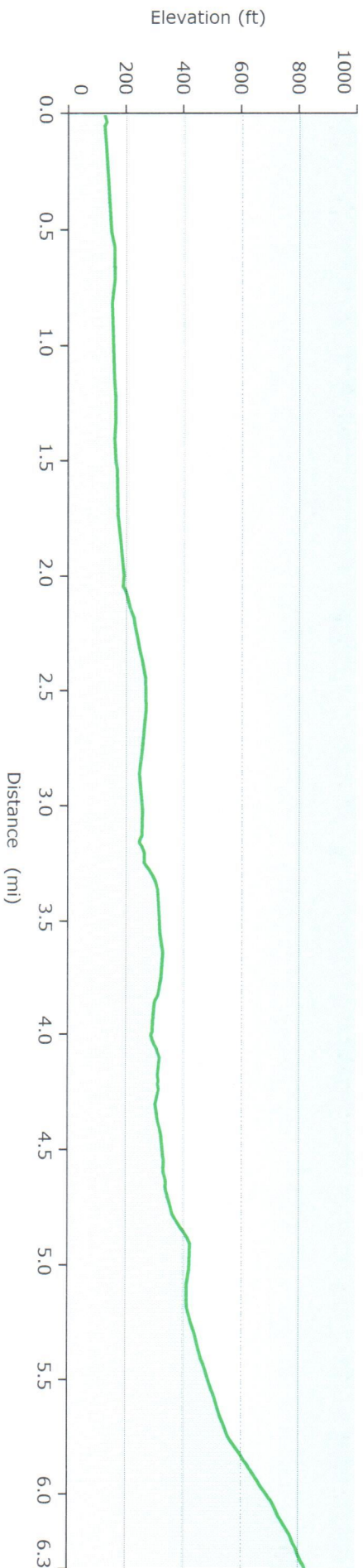


!ROAD BASHER MULDOON



1/1/2010

Graph



Statistics

Summary

Points: 170 Distance: 6.3 mi Area: 1.9 sq mi

Time

Elapsed Time: 0:14:02 Moving Time: 0:11:32 Stopped Time: 0:02:30

Speed

Avg: 27 mph Avg Moving: 33 mph Min: 0.0 mph Max: 49 mph

Elevation

Min: 121 ft Max: 823 ft Ascent: 791 ft Descent: 95 ft Grade: 2.1 %