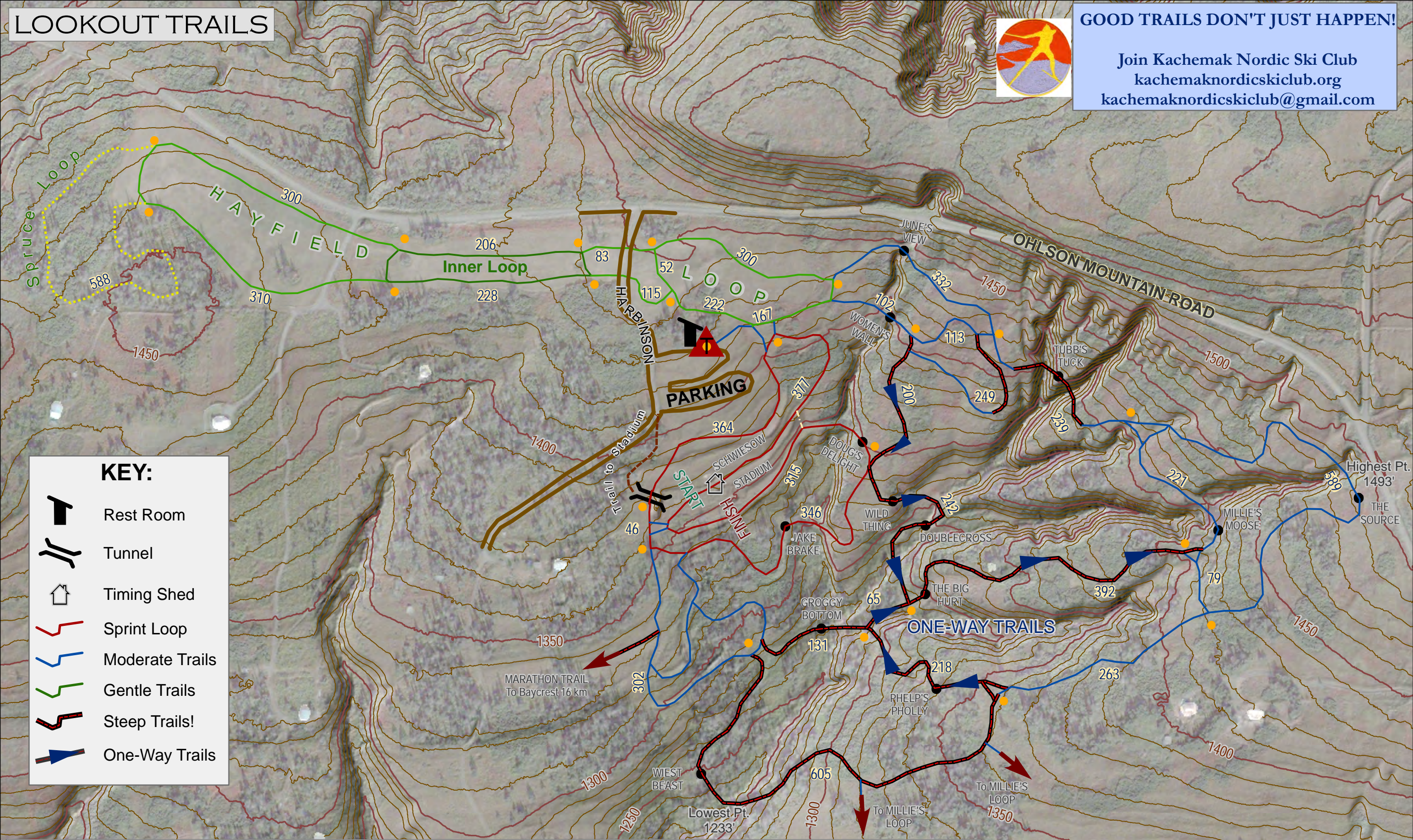


LOOKOUT TRAILS



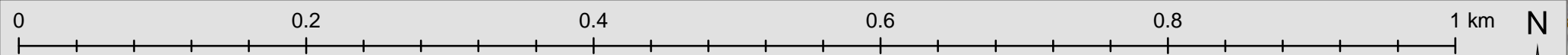
GOOD TRAILS DON'T JUST HAPPEN!

Join Kachemak Nordic Ski Club
kachemaknordicskiclub.org
kachemaknordicskiclub@gmail.com



KEY:

- Rest Room
- Tunnel
- Timing Shed
- Sprint Loop
- Moderate Trails
- Gentle Trails
- Steep Trails!
- One-Way Trails



PERIMETER TRAIL (from trailhead): 4.87 km
 OUTER / INNER HAYFIELD LOOP: 1.75 / 0.5 km
 w/SPRUCE LOOP: 2.24 km
 SPRINT LOOP: 1.43 km

● DISTANCES BETWEEN ORANGE DOTS IN METERS ●
 Contour Interval 10 feet
 1: 4,000 One inch equals 333 feet
 Alaska State Plane Zone 4, World Geodetic System 1984