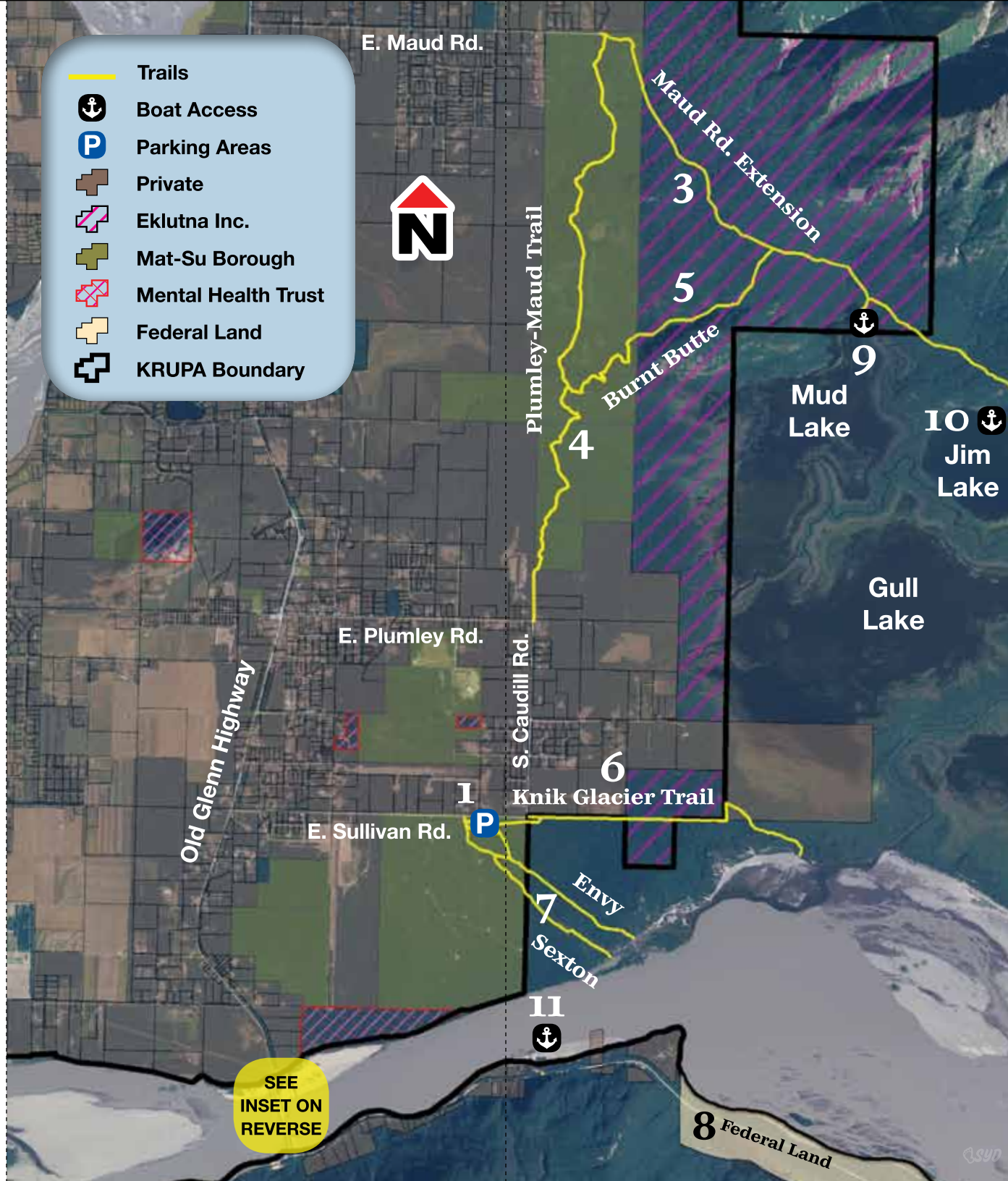


**KNIK RIVER PUBLIC USE AREA (KRPUA) - TARGET SHOOTING RESTRICTION AREAS**

- Trails
- Boat Access
- Parking Areas
- Private
- Eklutna Inc.
- Mat-Su Borough
- Mental Health Trust
- Federal Land
- KRPUA Boundary



SEE  
INSET ON  
REVERSE



# Knik River Public Use Area (KRPUA)



STATE OF ALASKA  
DEPARTMENT OF NATURAL RESOURCES  
DIVISION OF MINING, LAND, AND WATER  
Southcentral Regional Land Office  
[www.knikriver.alaska.gov](http://www.knikriver.alaska.gov)  
907.269.8552





photo by Dave Griffin

The KRPUA is a legislatively designated area (AS 41.23.180-230) managed by the Department of Natural Resources (DNR), Division of Mining, Land, and Water, Southcentral Regional Office. The area was created through a legislative process and signed into law by Governor Frank Murkowski on June 30, 2006 (House Bill 307). Land within the KRPUA boundary encompasses approximately 200,000 acres of state owned lands, and another 60,000 acres of federally owned lands administered by the Bureau of Land Management (Friday Creek and Hunter Creek drainages). There are also approximately 1,000 acres of privately owned lands within the KRPUA boundaries. Private and federally owned lands within the area are not subject to KRPUA enforcement regulations and management objectives.

Like other Public Use Areas in the state, the purpose for establishing the KRPUA is to preserve, perpetuate, and enhance public recreation, enjoyment of fish and wildlife, and the traditional use of fish and wildlife resources. The area provides for a full-spectrum of outdoor recreational opportunities, and is open to motorized

and non-motorized recreational pursuits. Activities common to the area include riding of off-highway vehicles (OHV's), hunting, fishing, trapping, target shooting, boating, flying planes, horseback riding, biking, hiking, camping, and wildlife viewing.

Prominent land features of the region include the Knik Glacier, Knik River, Pioneer Peak, Jim Creek, Bodenbug Creek, Friday Creek, Metal Creek, and Hunter Creek. The high elevation Chugach Mountains that form the Knik River Valley make for a dramatic backdrop to the alluvial gravel bars and winding braids of the Knik River. Overall the area is rugged and remote, which is what makes it such a popular destination for campers, off-road enthusiasts, fixed wing aviators, horseback riders, and boaters. A sprawling lakes and wetlands complex on the north side of the river is popular among bird watchers, boaters, anglers, and hunters. The area as a whole offers a wide range of multiple-use outdoor recreational pursuits for people of all ages and interests.

Land managers with DNR's, Division of Mining, Land, and Water, Southcentral Regional Office actively

manage the area through partnerships with the Alaska State Troopers, Alaska Wildlife Troopers, the Alaska Department of Fish and Game, the Bureau of Land Management, and the Matanuska-Susitna

Borough. DNR land managers also receive input and support from local community councils, local residents, and regional outdoor recreation interests groups and non-profit organizations. ■

### ACCESS

- 1. Pavilion Parking Lot** - Located on Mat-Su Borough land, towards the end of Sullivan Avenue, this large unmaintained parking area serves as an access point for the Sexton and Envy trails as well as the Knik Glacier Trail.
- 2. Jim Lake** - This parking area is located on state land at the north end of Jim Lake. This minimally developed parking area provides access to Jim Lake and the Rippy Trail.
- 3. Maud Road Extension** - This minimally maintained road crosses Mat-Su Borough, Eklutna Inc., and State land. It provides access from the end of Maud Road to Mud and Jim Lakes, and the Rippy Trail.

### TRAILS

- 4. Plumley-Maud Trail** - Provides access between Maud and Plumley Roads thru private and Mat-Su Borough lands. This trail is reserved for multi-use.
- 5. Burnt Butte** - This trail leaves the Maud Rd. Extension and connects to the Plumley-Maud Trail crossing Mat-Su Borough and Eklutna Inc. land. This trail is reserved for non-motorized uses.
- 6. Knik Glacier Trail** - This trail is accessed from the corner of Sullivan Ave. and Caudill Road, and also via a small spur trail from the Pavilion Parking Area; and provides year round multi-use access to the KRPUA.

**7. Sexton** - This trail is accessed from the Pavilion Parking Area, and provides year round multi-use access to the KRPUA.

**8. Envy Trail** - This trail is accessed from the corner of Sullivan Ave. and Caudill Road, and also via a small spur trail from the Pavilion Parking Area.

### BOAT LAUNCHES

- 9. Mud Lake** - Primitive/unimproved boat launch with limited parking area.
- 10. Jim Lake** - Primitive/unimproved boat launch with limited parking area.



photo by Dave Griffin



**11. Man Made Lake** - Primitive/unimproved boat launch with limited parking area.

### FEDERAL LAND

**12. Federal land** located on the south side of the Knik River provides access to the KRPUA.

### SALMON BEARING WATERS

The KRPUA contains multiple salmon bearing water bodies that are important for salmon reproduction. Water bodies within the KRPUA home to salmon include but are not limited to Bodenbug Creek, Jim Creek, McRoberts Creek, Friday Creek, and the Knik River. When crossing a salmon stream with any motorized vehicle, you are required to cross within the shortest and most direct approach; this is usually perpendicular to the flow of the water. Driving a vehicle up and downstream for any other purpose, including general recreation is strictly prohibited.

### KNIK RIVER BRIDGE AREA

Access to the KRPUA on the northwest and northeast side of the Old Glenn Highway bridge is provided by state right of way.

Crossing or using private lands without the landowner's permission, other than on legally established easements or public access rights of way, may be considered trespass.

*Due to ongoing land status changes the information in this brochure is subject to change. This brochure will be updated as needed.*

## KNIK RIVER PUBLIC USE AREA REGULATIONS (11 AAC 96.016(b)(c))

State of Alaska Department of Natural Resources  
Division of Mining, Land, and Water

VIOLATION	CITATION
-----------	----------

- |   |       |
|---|-------|
| 1. Burning a wooden pallet, or other non-naturally occurring debris .....       | \$50  |
| 2. Littering.....   | \$100 |
| 3. Fire larger than 4 feet in diameter within 100 feet of forested area.....    | \$50  |
| 4. Cutting of trees larger than 5 inches in diameter .....                      | \$75  |
| 5. Target shooting in restricted areas .....                                    | \$75  |
| 6. Vehicle disturbance of wetlands and organic mat greater than 6 inches .....  | \$300 |
| 7. Damage, deface, destroy, or removal of public property.....                  | \$300 |
| 8. Discharging firearms at targets made of unauthorized materials .....         | \$50  |
| 9. Operating a vehicle over 10,000 pounds without authorization.....            | \$150 |
| 10. Transporting non-functional vehicle into the area .....                     | \$400 |
| 11. Leaving vehicle unattended for more than 72 hours .....                     | \$300 |
| 12. Camping in one location longer than 14 days.....                            | \$100 |
| 13. Failure to obtain appropriate permits..                                     | \$150 |
| 14. Failure to register commercial recreation use.....                          | \$50  |
| 15. Unauthorized commercial harvest of non-timber forest products .....         | \$100 |
| 16. Unauthorized construction, maintenance, or abandonment of a structure ..... | \$200 |
| 17. Discharging fireworks.....  | \$50  |
| 18. Harassing fish and wildlife.....  | \$300 |
| 19. Unauthorized construction or development of a trail .....                   | \$100 |
| 20. Place, dump, discard, or release hazardous substances.....                  | \$300 |