

Nurses Cabin



Occupancy 2 **\$35**
Location: north shore of Tustumena Lake
Access: boat, snowmobile, float/ski plane, hike, ski, horseback

Pipe Creek Cabin



Occupancy 2 **\$35**
Location: north shore of Tustumena Lake in Kenai NWR Wilderness
Access: boat, float/ski plane, snowmobile

Kenai National Wildlife Refuge Public Use Cabin Program



Have you ever wanted to relax in a rustic cabin?

Now you can!

Reserve a cabin at Kenai National Wildlife Refuge.



Cost: \$35 - \$45 per night plus booking fee.

Maximum stay: 7 nights

Cabins accommodate 4-6 occupants depending on cabin size.

What is provided: Each cabin has bunk beds, wood heating stove, table, benches, and an outhouse. A campfire ring is provided outside. Cabins are periodically supplied with broom, shovel, bow saw, water bucket and fire extinguisher.

What you need to bring: Sleeping bags, camp pads, camp stove, cook pots, dishes, water purification, food, toilet paper and garbage bags. You will need to secure food, garbage and supplies from bears during your stay and pack out all trash.

Firewood: Bring dry kindling with you. It is recommended that you also bring prepared firewood. You may collect dead and down wood for use during your stay. However, available dead and down wood may be very limited in the immediate area.

To Make a Cabin Reservation:

Visit www.recreation.gov and search for "Kenai National Wildlife Refuge Cabins" or call a recreation.gov representative at **1-877-444-6777**

Direct Link to all 14 cabins on recreation.gov: <http://1.usa.gov/tsavSb>

For Cabin Specific Questions:

Call Kenai National Wildlife Refuge (Monday-Friday 8am-4:30pm) 907-262-7021



Caribou Island Cabin



Occupancy 4 **\$35**
Location: on island on Tustumena Lake in Kenai NWR Wilderness
Access: boat, float/ski plane, snowmobile, ski

Big Bay Cabin



Occupancy 2 **\$35**
Location: south shore of Tustumena Lake in Kenai NWR Wilderness
Access: boat, float/ski plane, snowmobile, ski

Emma Lake Cabin



Occupancy 2 **1st Come - 1st Served**
Location: east shore of Emma Lake in Kenai NWR Wilderness
Access: boat to Lake Emma Trail and a 3.5 mile hike to the cabin **NOTE: Emma Lake is CLOSED to public aircraft operations.**

McLain Lake Cabin



Occupancy 4 **\$45**
Location: southeast end of McLain Lake
Access: float/ski plane, snowmobile, canoe

Snag Lake Cabin



Occupancy 4 **\$45**
Location: east shore of Snag Lake on a prominent peninsula
Access: float/ski plane, snowmobile

Dolly Varden Lake Cabin

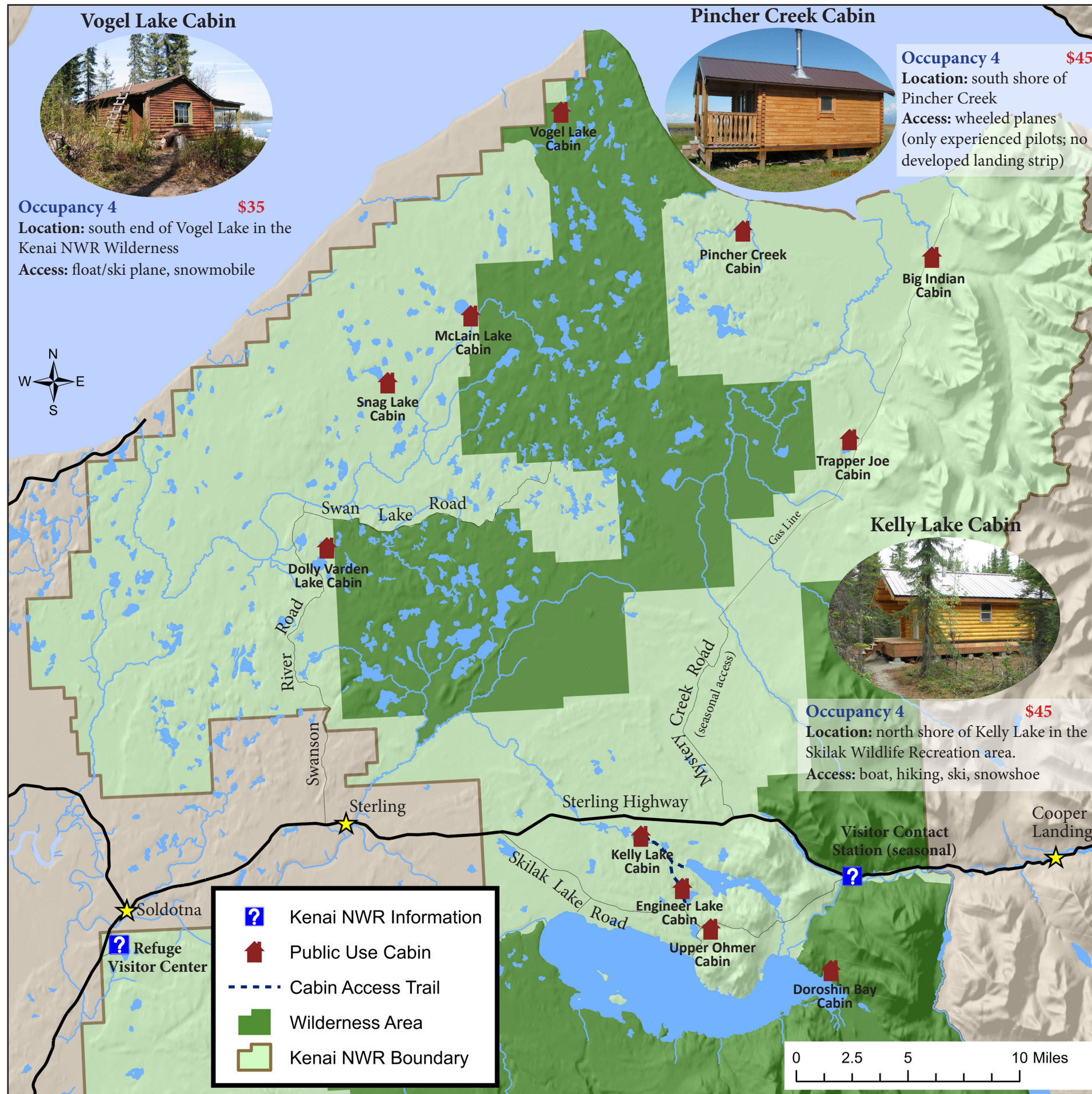


Occupancy 4 **\$45**
Location: north shore of Dolly Varden Lake
Access: boat, ski, snowshoe

Engineer Lake Cabin



Occupancy 4 **\$45**
Location: north shore of Engineer Lake in the Skilak Wildlife Recreation Area
Access: boat, hike, ski, snowshoe



Big Indian Creek Cabin



Occupancy 2 **\$35**
Location: north bank of Big Indian Creek
Primary access: wheeled plane, snowmobile

Trapper Joe Cabin



Occupancy 2 **1st come-1st served**
Location: north shore of Trapper Joe Lake
Primary access: float/ski plane, snowmobile, ski
 (Seasonal access: licensed 4WD trucks)

Upper Ohmer Lake Cabin



Occupancy 4 **\$45**
Location: Upper Ohmer Lake in Skilak Wildlife Recreation Area
Access: Short 1/8 mile walk, seasonally handicapped accessible with assistance

Doroshin Bay Cabin



Occupancy 2 **\$35**
Location: eastern shore of Skilak Lake in the Kenai NWR Wilderness
Access: Boat, float/ski plane, ski, snowmobile