

Kelly Lake Cabin

Updated: December 20, 2013

Overview:

Kelly Lake cabin is a rustic log cabin built in the summer of 2009. The 16' x 18' foot log cabin sleeps four people comfortably. It is equipped with two bunk beds, table with benches, broom, shovel, water bucket, fire extinguisher, established campfire ring and a wood stove for heat. An outdoor toilet is provided. A rowboat and oars are provided but lifejackets are not.



Visitors will need to bring their own water for drinking, cooking and cleaning purposes. Water taken from the lake must be treated or boiled prior to consumption. Visitors will need to bring their own bedding and sleeping pads, cooking gear and utensils among other necessities. All garbage and food must be packed out. Firewood is limited in the area and it is recommended to bring in your own dry firewood with you.

Recreation Opportunities:

This cabin offers seclusion and fair fishing for Rainbow Trout. The area is home to a variety of wildlife, including moose, black and brown bears and wolves. The Seven Lakes trails provides hiking opportunities, the cabin experience can be extended with a hike and stay at the Engineer lake cabin 3.5 mile further along the Seven Lakes Trail. In the winter there is cross-county skiing and snowshoeing. Hunting is not allowed. Review Alaska Department of Fish and Game hunting and fishing regulations for more details.



Special Considerations

Users must provide a U. S. Coast Guard approved flotation devices for each passenger transported on boats. Use of the Refuge provided boat is at your own risk. When using power boats, a “no-wake” restriction applies to Kelly Lake. Kelly Lake is closed to public aircraft operation. The seclusion of this cabin necessitates being prepared for emergency situations. Inclement weather may cause an unexpected extension of the trip. Bringing a personal

cooking stove is recommended. Carry in potable water or boil surface water 5 minutes before drinking. Remember to pack out your trash.

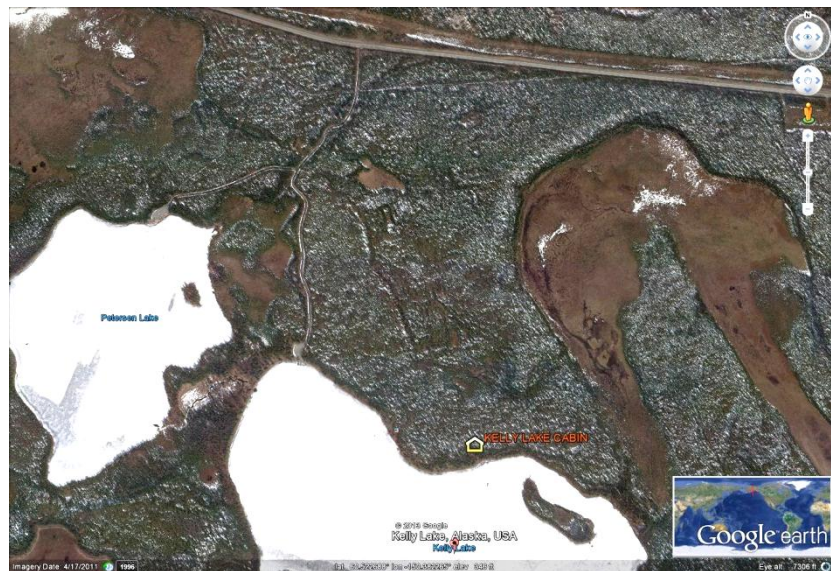
Reservations

Occupancy of Refuge cabins is by permit only (\$45 per night per party). To make a cabin reservation visit www.recreation.gov and search for “Kenai National Wildlife Refuge Cabins” or call a recreation.gov representative at 1-877-444-6777.

For cabin specific questions call Kenai National Wildlife Refuge. (Monday-Friday 8 am – 4:30 pm) (907) 262-7021 <http://kenai.fws.gov/>

Directions

The cabin is located south of the Sterling Highway accessible by the Kelly Lake Road at Mile 68.1 and then a short ¼ mile trail from the Kelly Lake campground on the Seven Lakes trail. The cabin is south facing overlooking Kelly Lake in a forest of spruce and birch trees. Access is by hiking, boat, ski, snowshoeing. Kelly Lake is one of the few Refuge lakes open for a vehicle to drive on the lake for the purpose of ice-fishing only.



Kelly Lake is open to snowmobiles use for ice fishing access only.

Refer to USGS map Kenai C-2. GPS: Latitude 60° 31.11', Longitude 150° 22.783'. NAD 83 or WGS 84, Degree, Decimal, Minutes.