

Guide to

Indian To Girdwood Bike Path



in Chugach State Park



Trail Description:

Paved bike path from Indian to Girdwood. Parallels highway and railroad tracks. Trail provides access to Bird Creek Campground and the Bird Point Scenic Overlook.

Special Features:

This trail is wheelchair accessible. Numerous rest stops with benches, interpretive signs, and telescopes along the trail. Good beluga and tidal bore viewing. Numerous outstanding views of Turnagain Arm.

Access: Communities of Indian and Bird, Bird Creek Campground, Bird Point, and Girdwood.

Allowable Uses: Hiking, Biking, Skiing

Distance: 13.3 miles one way

Elevation Gain: 300 ft

Difficulty: Easy

Safety and Considerations:

Trail parallels the busy Seward Highway and caution should be taken when in close proximity to the road, especially with pets and/or children. A portion of the trail near Girdwood can become flooded during spring run-off. A portion of the trail closed in winter due to avalanche hazard.

Park Rules:

This trail is non-motorized, which prohibits motorcycle and ATV use.

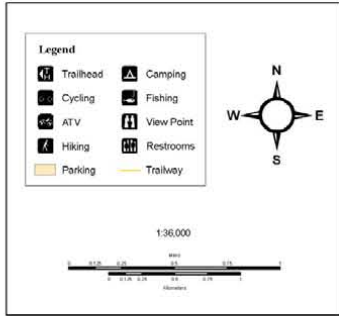
Visit <http://dnr.alaska.gov/parks/units/chugach> for a complete set of park rules.

Indian to Girdwood Trail Profile



Chugach State Park Headquarters
Mile 115, Seward Highway
(907) 345 - 5014
csp@alaska.gov



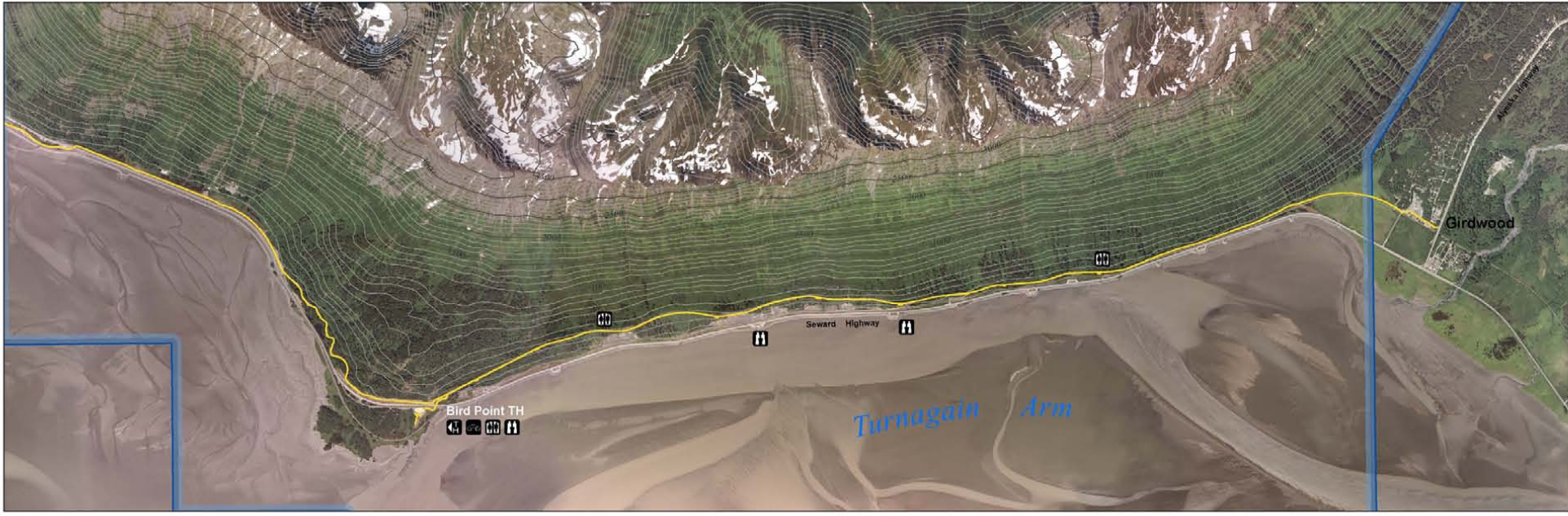


State of Alaska
 Trail Assessment and Inventory
 of
 Chugach State Park
 Summer 2008

Projected Coordinate System:
 NAD 83, State Plane Alaska, Zone 4
 Contour Interval: 100 feet

**Indian to Girdwood
 Bike Path**





Contact Information

Chugach State Park Headquarters
 Mile 115, Seward Highway
 (907) 345 - 5014
csp@alaska.gov