

# FORT WAINWRIGHT

## USARTRAK

Presented by J-SPORTSMAN

### What is USARTRAK?

It is the U.S. Army Recreation Tracking System (USARTRAK). USARTRAK has been established to facilitate public access to Fort Wainwright training lands, and allows recreational users to check in by phone, or online at <http://usartrak.isportsman.net>

As always, recreational activities are permitted on Fort Wainwright training lands, (providing they do not conflict with the military mission or training activities.)

The USARTRAK system is designed to keep you informed of training area closures.

**In the interest of safety, you must stay within the boundaries of the training areas open to recreation.**

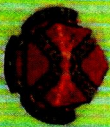
### How To Gain Recreational Access to Fort Wainwright Training Lands

1. Obtain a Recreation Access Permit (RAP). This can be obtained online or at one of our three kiosk locations: the Fort Wainwright Visitors Center, Fort Greeley Visitors Center, and Fort Wainwright Natural Resource office.

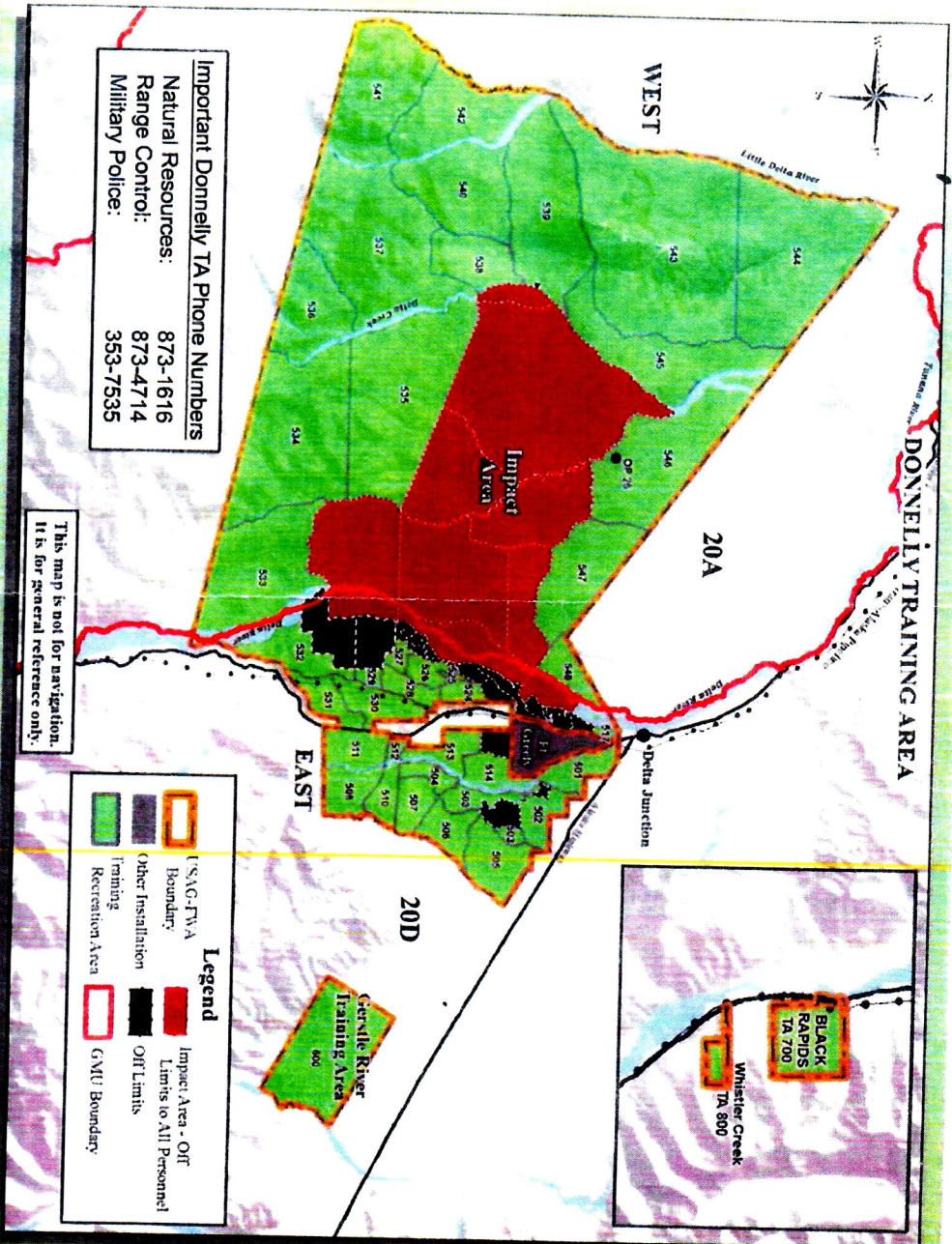
2. Check in by calling the USARTRAK automated phone system or online. This must be done before entering the training lands and you will need your RAP number to access the system.

This permit is free to all individuals and required by those 16 years of age and older.

Enjoy your time on Alaska Army Lands!

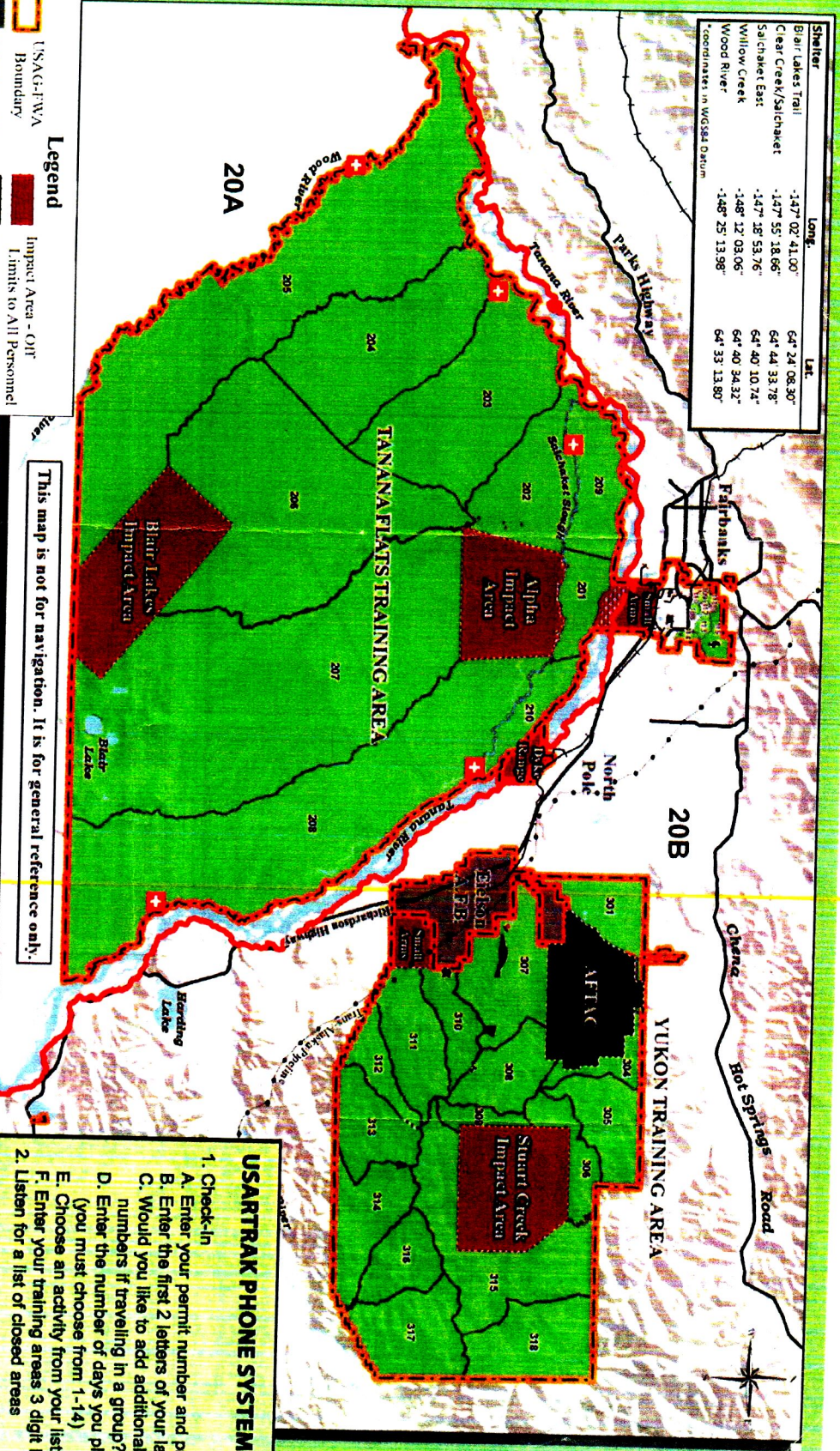


For more recreation information please visit our website at <http://usartrak.isportsman.net>



Shelter	Long.	Lat.
Blair Lakes Trail	-147° 02' 41.00"	64° 24' 08.30"
Clear Creek/Salchaket	-147° 55' 18.66"	64° 44' 33.78"
Salchaket East	-147° 38' 53.76"	64° 40' 10.74"
Willow Creek	-148° 12' 03.06"	64° 40' 34.32"
Wood River	-148° 25' 13.98"	64° 33' 13.90"

\*Coordinates in WGS84 Datum



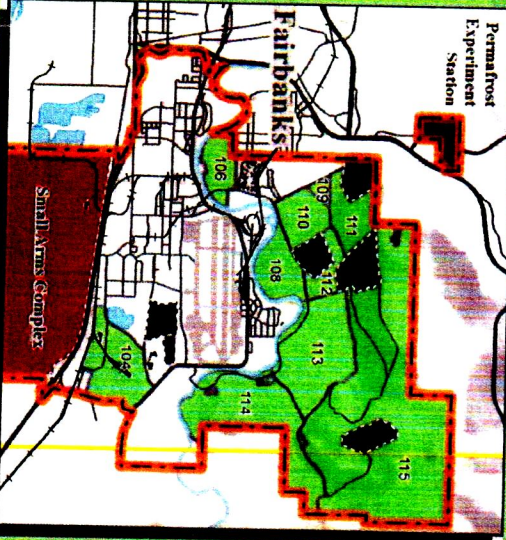
This map is not for navigation. It is for general reference only.

**Legend**

- USACE/FWA Boundary
- Impact Area - OIF Limits to All Personnel
- Other Installation
- OIF Limits
- Training / Recreation Area
- Small Arms Danger Zone
- Emergency Shelter
- GMI Boundary

**Important Fort Wainwright Phone Numbers**

Natural Resources: 361-9686  
 Range Control: 353-1266  
 Military Police: 353-7535



**USARTRAK PHONE SYSTEM OPTIONS**

1. Check-In
  - A. Enter your permit number and press #
  - B. Enter the first 2 letters of your last name
  - C. Would you like to add additional permit numbers if traveling in a group?
    - D. Enter the number of days you plan to stay (you must choose from 1-14)
    - E. Choose an activity from your list of choices
    - F. Enter your training areas 3 digit ID
  2. Listen for a list of closed areas

USARTRAK IS DESIGNED TO HELP FACILITATE RECREATION ON ARMY LANDS. DUE TO TRAINING ACTIVITIES, ACCESS MAY BE RESTRICTED FOR MAPS AND MORE INFORMATION REGARDING RECREATION PLEASE VISIT OUR WEBSITE AT [HTTP://USARTRAK.SPORTSMAN.NET](http://USARTRAK.SPORTSMAN.NET)

