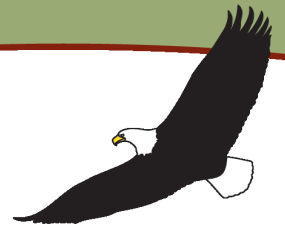


Guide to

Compeau Trail & Colorado Creek Winter Trail

in Chena River State Recreation Area



Compeau Trail

Trail Access: Mile 29.9 Chena Hot Springs Road

Allowable Uses: ATV, Hiking, Biking, Horseback Riding, Snowmobile, Skiing

Distance: 18 miles one-way

Total Elevation Gain: 2100 feet

Colorado Creek Winter Trail

Trail Access: Mile 31.6 Chena Hot Springs Road

Allowable Uses: Snowmobile, Skiing, Mushing

Distance: 5.7 miles one-way

Total Elevation Gain: 400 feet



Compeau Trail Elevation Profile



Compeau Trail:

This multi-use trail provides year-round access to the Colorado Creek Cabin. Follow the blue/black trail markers for 18 miles to reach the cabin. The entire Compeau Trail follows an easy contour route with grades of 10% or less. The Compeau Trail makes a turn at mile 10; just past this turn the trail intersects the Little Chena Dozer Line. You can also get to the cabin following the dozer line. After riding 5.5 more miles, the trail intersects a 1950's dozer line; a sign marks this intersection. Follow the steep grade 3/4's of a mile downhill before connecting with the Compeau Trail again. The last 2 miles gradually descend to the cabin. In winter, the Compeau Trail can be accessed from the Colorado Creek Winter Trail.

Colorado Creek Winter Trail:

The Colorado Creek Winter Trail provides shorter access to the Colorado Creek Cabin. Summer use is prohibited due to boggy soils.

Little Chena Dozer Line:

The Little Chena Dozer Line is accessible from the Compeau Trail; it was constructed during the Boundary Fire in 2004. This trail is very rough and has steep grades, but the ridge offers stunning views of the Chena River Valley, the Alaska Range, and North towards the White Mountains. The trailhead to the Little Chena Dozer Line is at the end of a 6-mile wood-cutting road known as the School Road. This un-maintained road leaves Chena Hot Springs Road at mile 18, next to Two Rivers Elementary School. The Little Chena Dozer Line is 13.5 miles long ending at the top of a prominent ridge. The Compeau Trail joins the Little Chena Dozer Line at about mile 8.5 of the Little Chena Dozer Line.

Colorado Creek Cabin

Reservations are required to stay at the Colorado Creek Cabin. To reserve the cabin visit:

<http://dnr.alaska.gov/parks/cabins/north.htm>

Cabin Coordinates: (N64°58.233' W146°39.407')

Park Access:

Due to saturated soils during spring break-up, motorized trails are closed (except for hiking) from April 20th through May 24th. Contact the Northern Area office for closure dates; dates may vary.

Park Rules:

Disturbing or gathering natural materials is prohibited in the Recreation Area, except for berries, mushrooms, and similar edibles for personal use. For a complete set of park rules visit:

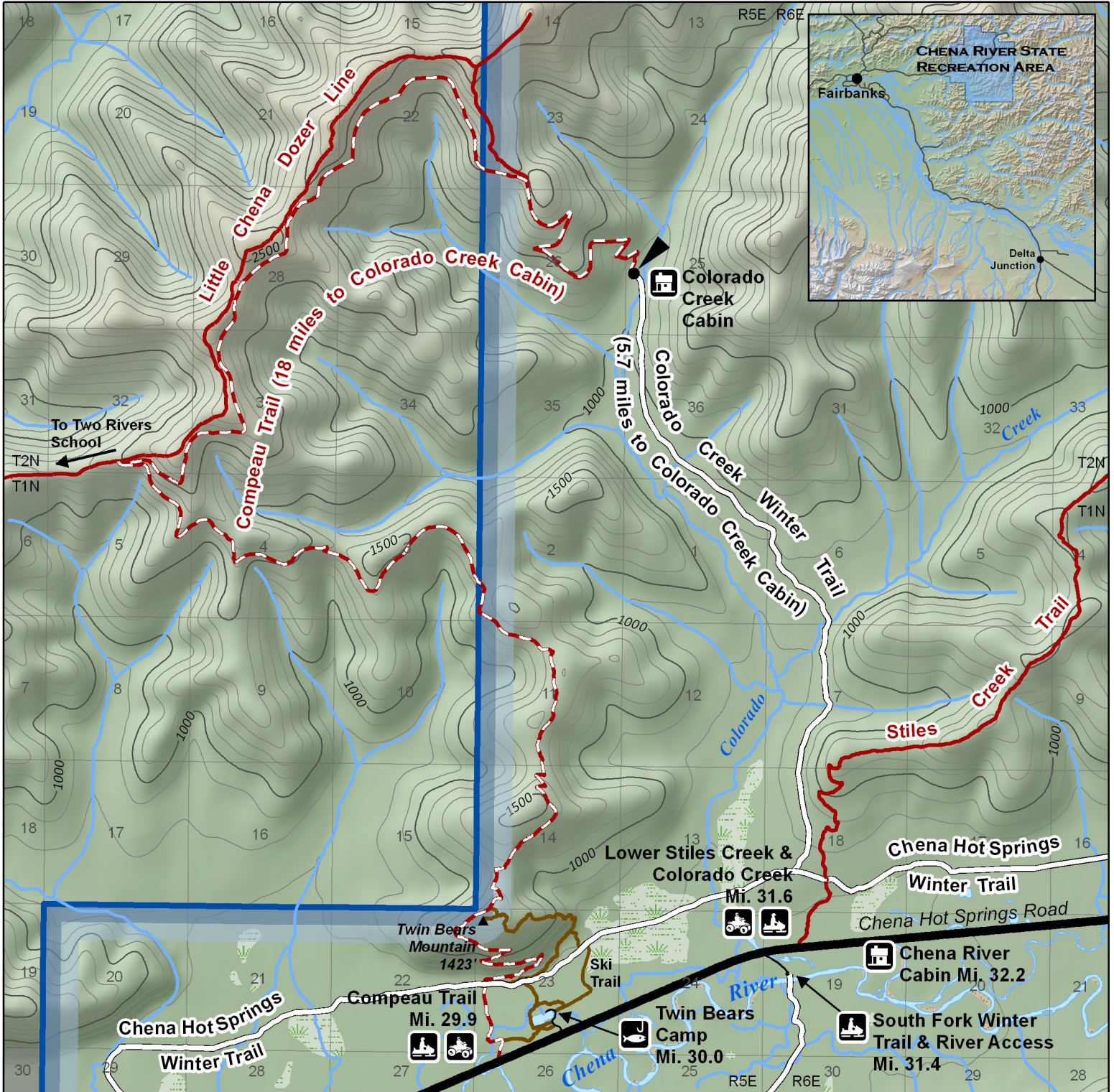
<http://dnr.alaska.gov/parks/units/chena/chenareg.htm>

Alaska State Parks
Northern Area Office
3700 Airport Way
Fairbanks, AK 99709
(907) 451 - 2695





Chena River State Recreation Area Compeau Trail & Colorado Creek Winter Trail



Projected Coordinate System:
NAD 83, State Plane Alaska, Zone 3
Contour Interval: 100 Feet,
1:60,000

0 0.5 1 Miles
0 0.5 1 Kilometers

ATV Riding	Snow-mobiling	Hiking	Fishing	Cabin
CRSRA Boundary	Bridge	Road	Non-Motorized Trail	
Compeau Trail	Winter Trail	Stream		
Multi-Use Trail (ATV)	River			

Produced by: Alaska Department of Natural Resources, Division of Parks and Outdoor Recreation.
Date Published: June 15, 2013. Cartographer: Justin Wholey.

This map represents differential GPS data collected during the Alaska State Parks Trail Inventory Project that was started in conjunction with National Park Service (NPS) Rivers and Trails Conservation Assistance (RTCA) program and Alaska Department of Natural Resources (ADNR) Information Resources Management (IRM). Trail Data was gathered with the assistance from Northern Region Alaska State Parks staff.

Alaska State Parks Northern Region Office: (907) 451-2695. www.dnr.state.ak.us/parks.
Alaska State Troopers: (907) 451-5100. Emergency: 911.

The State of Alaska makes no expressed or implied warranties (including warranties of merchantability and fitness) with respect to the character, function, or capabilities of this product or its appropriateness for any user's purposes. In no event will the State of Alaska be liable for any incidental, indirect, special, consequential or other damages suffered by the user or any other person or entity whether from use of the product, any failure thereof or otherwise, and in no event will the State of Alaska's liability to you or anyone else exceed the fee paid for the product.